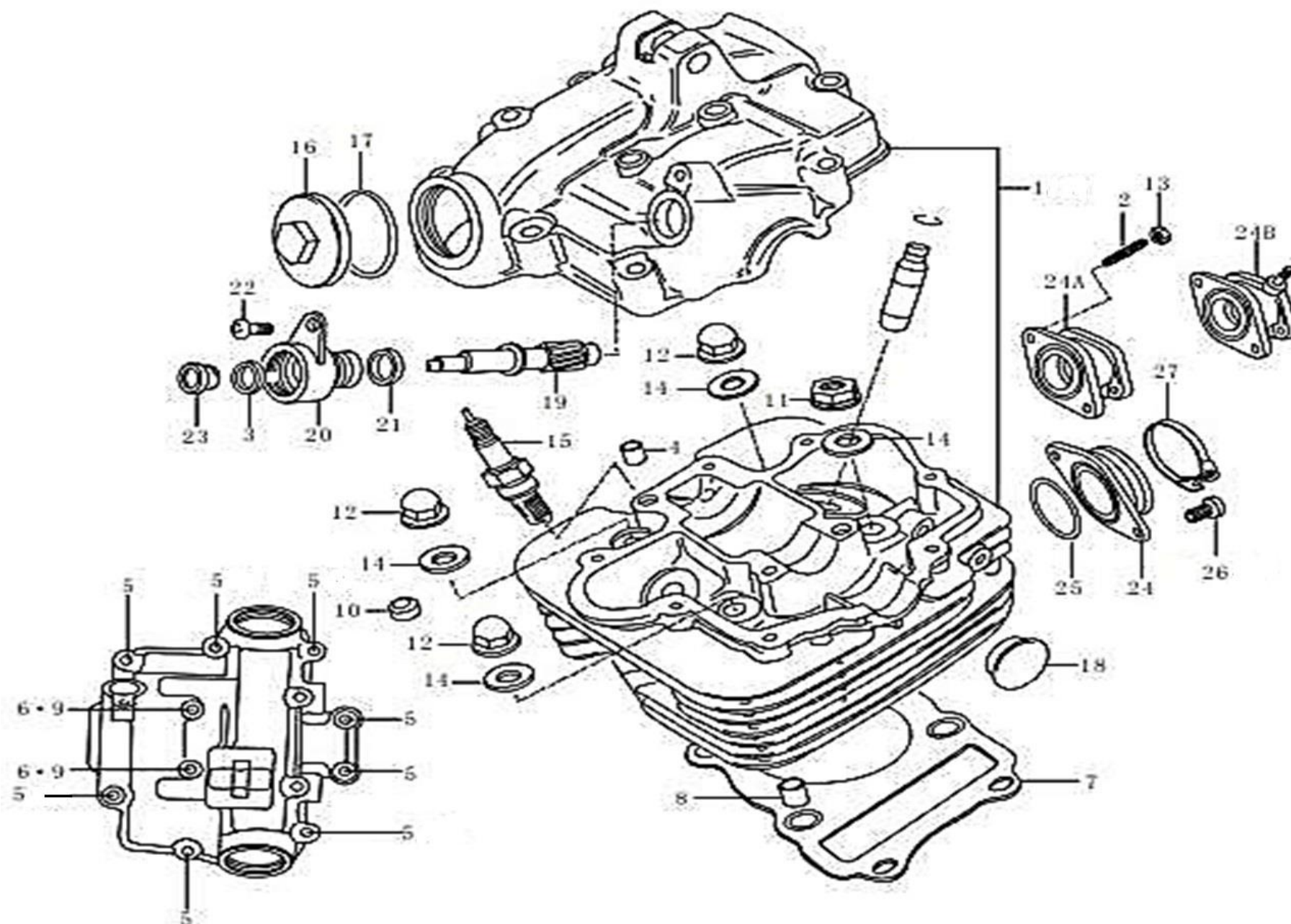
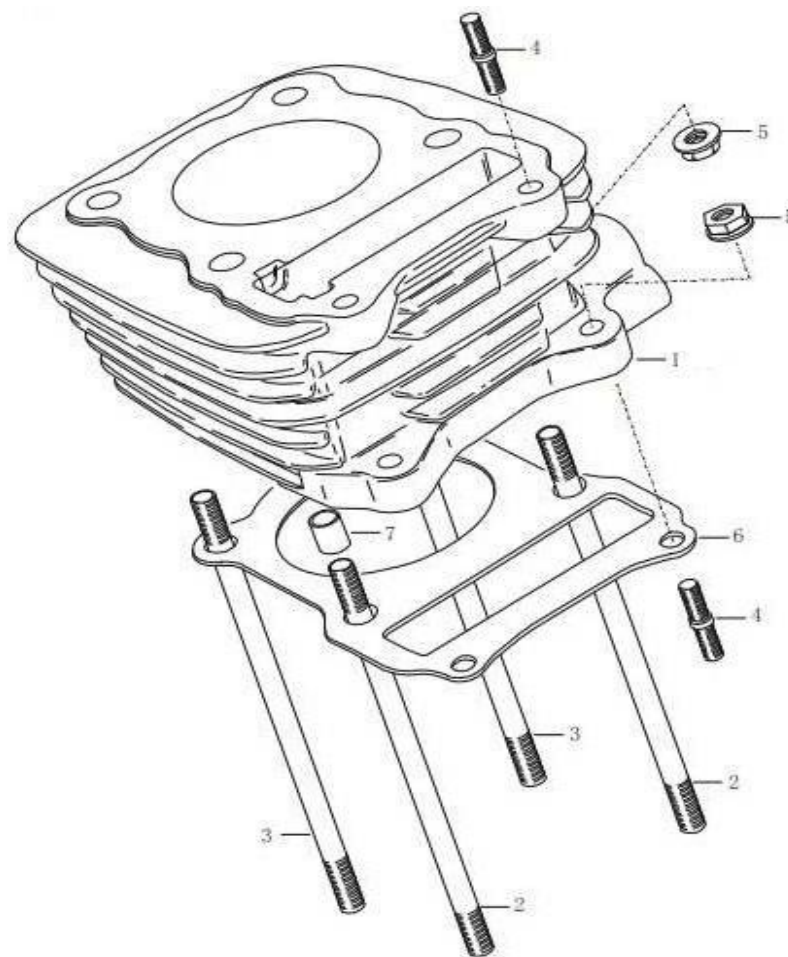


E01 CYLINDER HEAD (气缸头)



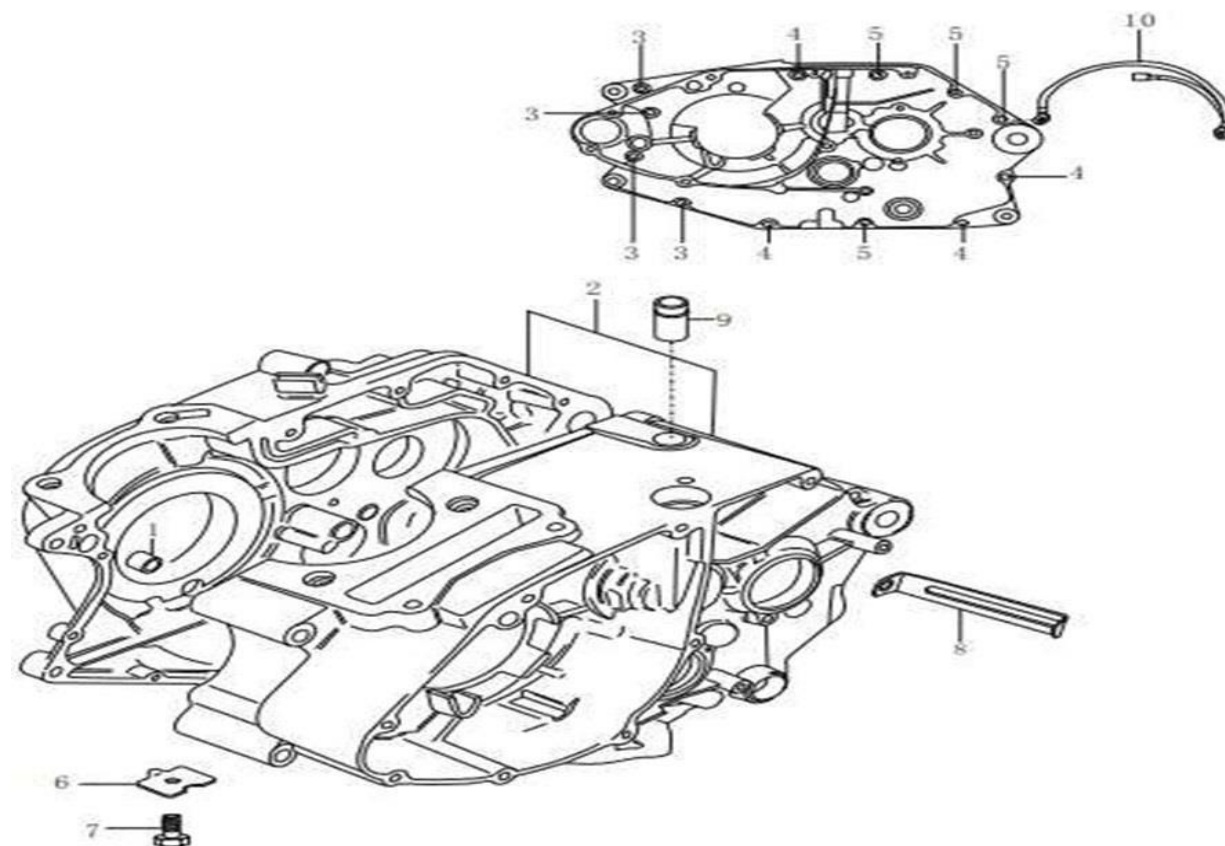
NO.	CODE	CN DESCRIPTION	EN DESCRIPTION	QTY	REMARKS
E1-1	11101QK01000-009	气缸头组合	Head, cylinder	1	
E1-2	09108Q060805	双头螺柱	Stud bolt	2	
E1-3	09161Q110801	橡胶垫	RubberWasher	1	
E1-4	09206Q080806	定位销8×11	Pin 8×11	2	
E1-5	02104Q060355	螺栓M6×35	Bolt M6×35	8	
E1-6	02104Q060602	螺栓M6×60	Bolt M6×60	2	
E1-7	11141QK01000	气缸头密封垫	Gasket cylinder head	1	
E1-8	09206Q110803	定位销11×16	Pin 11×16	2	
E1-9	09168Q060807	密封垫	Gasket	2	
E1-10	11151QK01000	减震块	Rubber pad	6	
E1-11	09159Q080802	气缸头螺母M8	Nut M8	1	
E1-12	09159Q080804	盖形螺母M8	Nut M8	3	
E1-13	05406Q011065	螺母M6	Nut M6	2	
E1-14	09168Q080807	密封垫	Washer	4	
E1-15	09482Q000809	火花塞(CR8E)	Spark plug(NGK CR8E)	1	
E1-16	11175QK01000-009	检查孔帽	Cap, inspection	2	
E1-17	09280Q290802	O型圈 (3.0×29.5)	O-Ring (3.0×29.5)	2	
E1-18	09241Q220801	塞子	Plug, head	1	
E1-19	26431QK01000	转速表从动齿轮	Geartachometer driven	1	
E1-20	26441QK01000	连接套管	Sleeve	1	
E1-21	26451QK01000	油封	Oil seal	1	
E1-22	09128Q050802	螺钉M5×12	Screw M5×12	1	
E1-23	09289Q040802	油封5×12×18	Oil seal 5×12×18	1	
E1-24A	13111QK01010	进气弯管	Pipe, intake	1	
E1-25	09280Q310801	O型圈 (2.4×31.7)	O-Ring (2.4×31.7)	1	
E1-26	02104Q060165	螺钉M6×16	Screw M6×16	2	
E1-27	09402Q462007	卡夹	Clamp	1	

E02 CYLINDER (气缸)



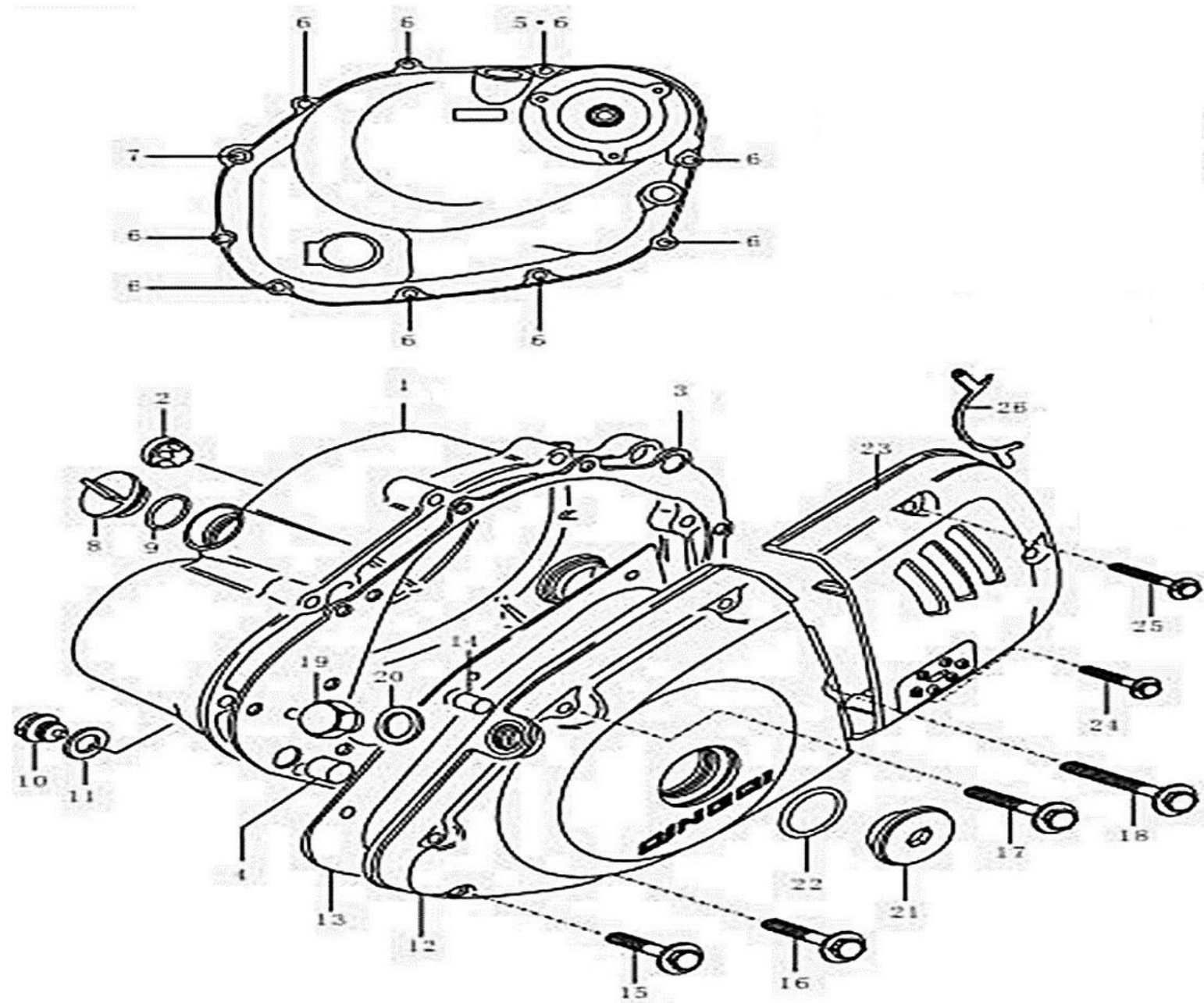
NO.	CODE	CN DESCRIPTION	EN DESCRIPTION	QTY	REMARKS
E2-1	11210QK01000-009	气缸体	Cylinder	1	
E2-2	09108Q080826	双头螺柱 L:148	Stud bolt L:148	2	
E2-3	09108Q080827	双头螺柱L:153	Stud bolt L:153	2	
E2-4	09108Q060824	双头螺柱 L:34	Stud bolt L:34	4	
E2-5	05404Q011062	螺母M6	Nut M6	4	
E2-6	11241QK01020	气缸密封垫	Gasket, cylinder	1	
E2-7	09206Q110804	定位销11×14	Pin 11×14	2	

E03 CRANKCASE (箱体)



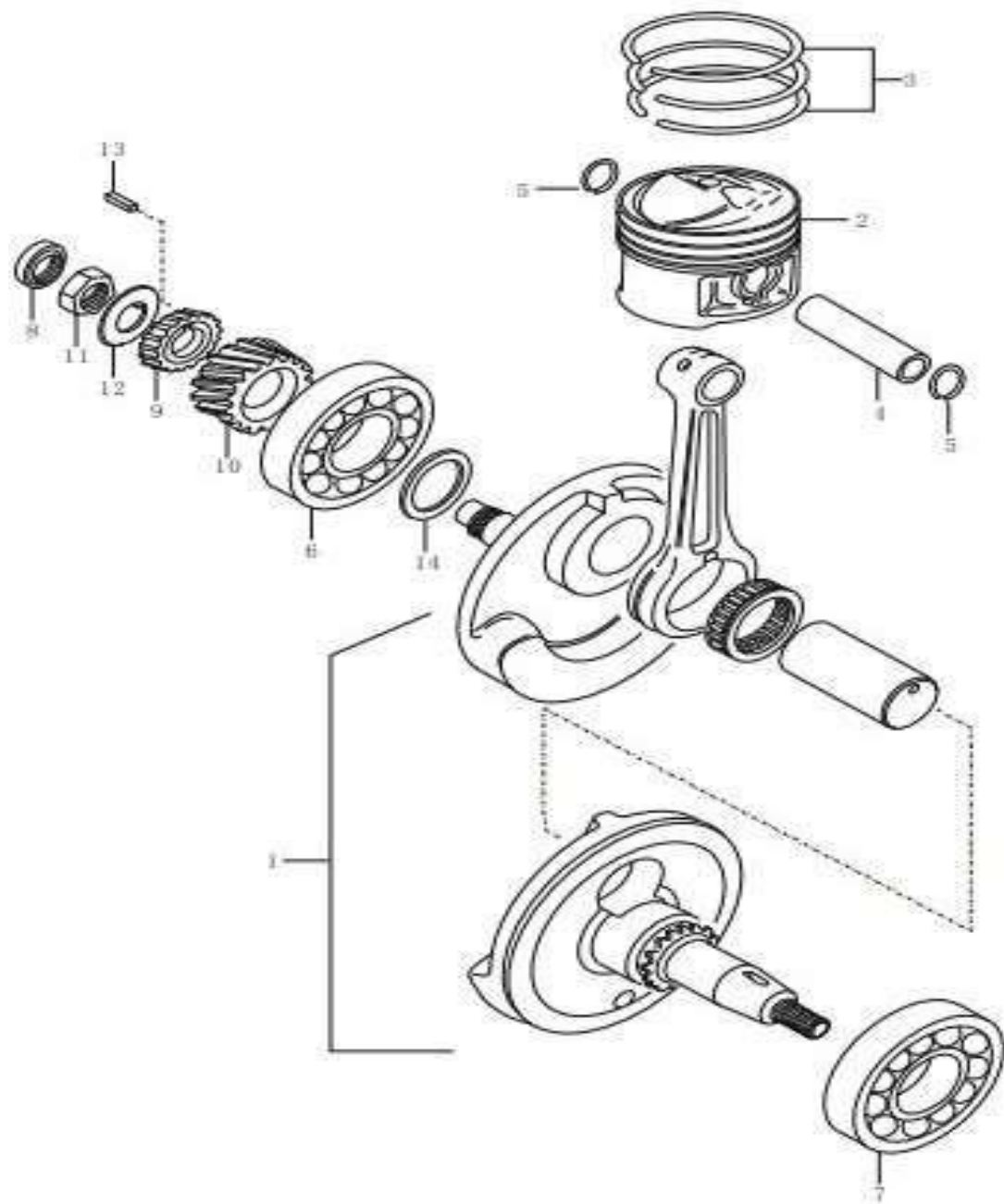
NO.	CODE	CN DESCRIPTION	EN DESCRIPTION	QTY	REMARKS
E3-1	09206Q130803	定位销13×18	Pin 13×18	2	
E3-2	6401017002100	箱体组合	Crankcase set	1	
E3-3	02104Q060555	螺栓M6×55	Bolt M6×55	4	
E3-4	02104Q060605	螺栓M6×60	Bolt M6×60	4	
E3-5	02104Q060752	螺栓M6×75	Bolt M6×75	4	
E3-6	11319QK01000	压板	Plate	1	
E3-7	09124Q060807	螺栓M6×10	Bolt M6×10	1	
E3-8	09404Q066801	卡夹	Clip	1	
E3-9	09364Q120803	通气管接头	Hose, breath	1	
E3-10	33860QK01000	接地线	Lead wire	1	

E04 CRANKCASE COVER (箱盖)



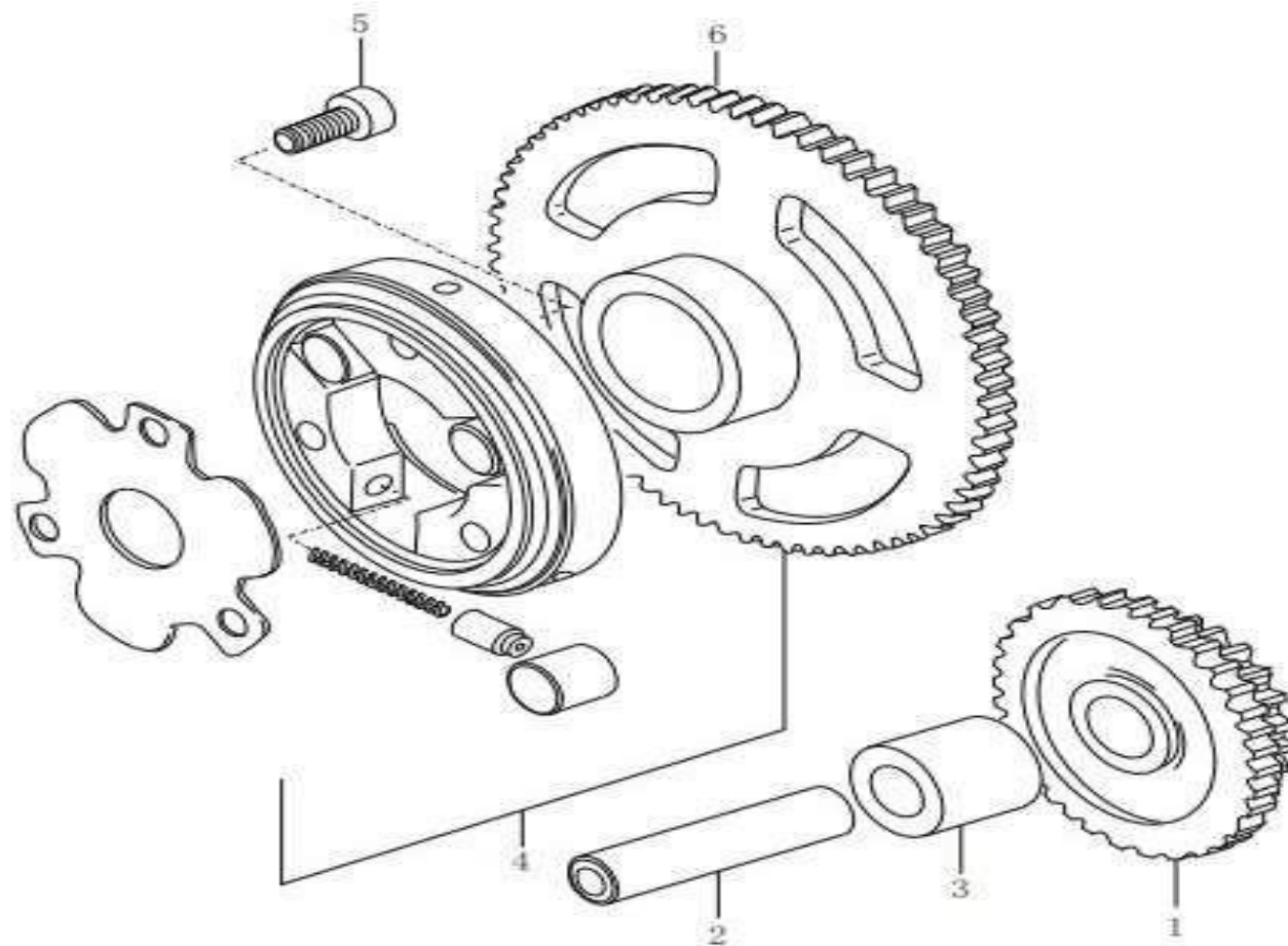
NO.	CODE	CN DESCRIPTION	EN DESCRIPTION	QTY	REMARKS
E4-1	11340QK01010-009	离合器盖组合	Cover clutch	1	
E4-2	11971QK01000	机油窥视镜	Lens, oil level	1	
E4-3	11482QK01070	离合器盖垫	Gasket, clutch cover	1	
E4-4	09206Q130803	定位销13×18	Pin 13×18	2	
E4-5	09168Q060807	密封垫	Gasket	1	
E4-6	02104Q060305	螺栓M6×30	Bolt M6×30	9	
E4-7	02104Q060455	螺栓M6×45	BoltM6×45	1	
E4-8	09259Q200801	塞子	Plug , oil filler	1	
E4-9	09280Q160802	O型圈 (3.1×16.8)	O-Ring (3.1×16.8)	1	
E4-10	09247Q140803	螺塞M14×12	Plug oil check M14×12	1	
E4-11	09168Q130801	复合垫圈	Gasket	1	
E4-12	11351QK01J60-009	磁电机盖	Cover, magneto	1	
E4-13	11483QK010200	磁电机盖垫片	Gasket magneto cover	1	
E4-14	09206Q090803	定位销9×12	Pin 9×12	1	
E4-15	02104Q060305	螺栓M6×30	Bolt M6×30	2	
E4-16	02104Q060355	螺栓M6×35	Bolt M6×35	2	
E4-17	02104Q060405	螺栓M6×40	BoltM6×40	2	
E4-18	02104Q060505	螺栓M6×50	Bolt M6×50	1	
E4-19	09247Q120802	螺塞M12×10	Plug, T.D.C M12×10	1	
E4-20	09168Q110801	复合垫圈	Gasket	1	
E4-21	11353QK01000-009	塞子	Plug	1	
E4-22	09280Q220801	O型圈(3.1×22.7)	O-Ring (3.1×22.7)	1	
E4-23	11361QK01000	链轮罩	Cover, engine sprocket	1	
E4-24	02104Q050255	螺栓M5×25	Bolt M5×25	1	
E4-25	02104Q050355	螺栓M5×35	Bolt M5×35	2	
E4-26	92810QMN2000	链条隔板	Retainer	1	

E05 CRANKSHAFT (曲柄连杆)



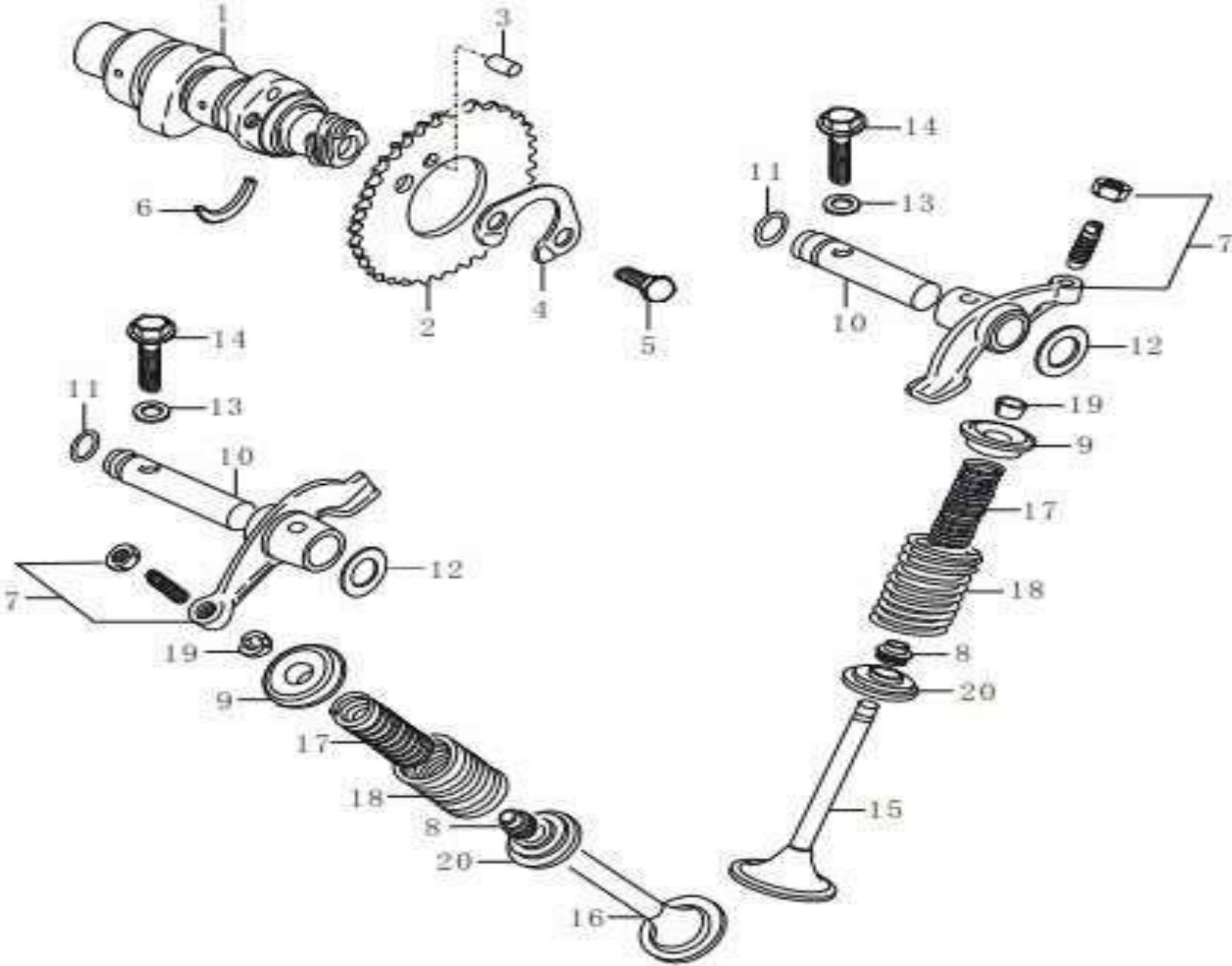
NO.	CODE	CN DESCRIPTION	EN DESCRIPTION	QTY	REMARKS
E5-1	12200QK01000	曲柄连杆总成	Crankshaft assy	1	
E5-2	12111QK01000	活塞	Piston	1	
E5-3	12140QK01000	活塞环组合	Ring set piston	1	
E5-4	12151QK01000	活塞销	Pin	1	
E5-5	09381Q140801	弹性挡环	Circlip	2	
E5-6	09262Q280804	右曲柄轴承	Bearing,RH 28×68×17	1	
E5-7	09262Q350802	左曲柄轴承	Bearing,LH 35×72×17	1	
E5-8	09282Q120801	右侧油封	Oil seal, RH 12×21×7	1	
E5-9	16321QK01000	机油泵驱动齿轮	Gear oil pump drive	1	
E5-10	21111QK01000	初级驱动齿轮	Gear primary drive	1	
E5-11	09140Q160804	螺母M16	Nut M16	1	
E5-12	09166Q160801	锁紧垫片	Lock washer	1	
E5-13	09421Q040801	键	Key	1	
E5-14	12262QK01000	调整垫片	Washer	1	

E06 STARTER CLUTCH (起动离合器)



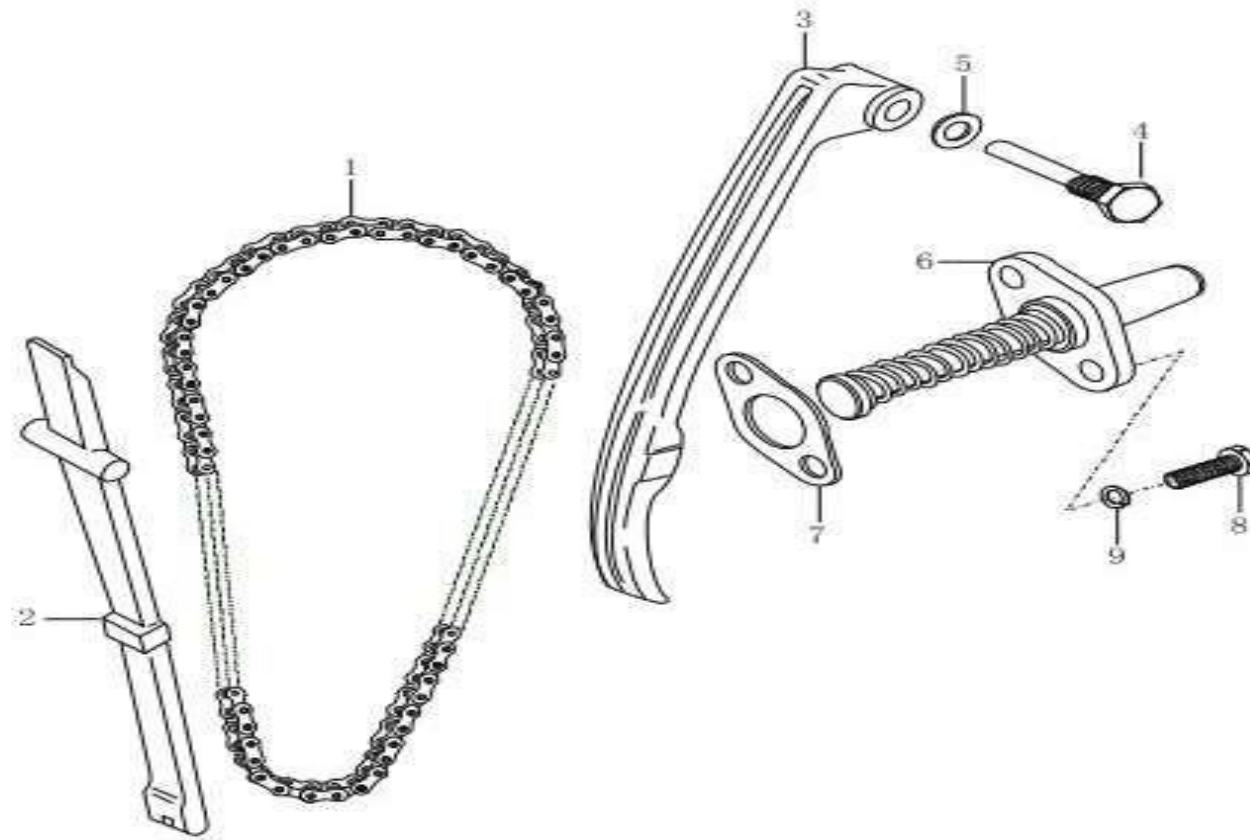
NO.	CODE	CN DESCRIPTION	EN DESCRIPTION	QTY	REMARKS
E6-1	12611QK01000	电起动惰轮	Gear, starter idle	1	
E6-2	09206Q130804	销轴	Pin	1	
E6-3	09180Q130801	衬套	Spacer	1	
E6-4	12600QK01000	电启动离合器组合	Clutch set starter	1	
E6-5	03614Q006169	螺钉M6×16	Bolt M6×16	3	
E6-6	12620QK01000	电启动齿轮组合	Gear starter assy	1	

E07 CAM SHAFT VALVE (配气总成)



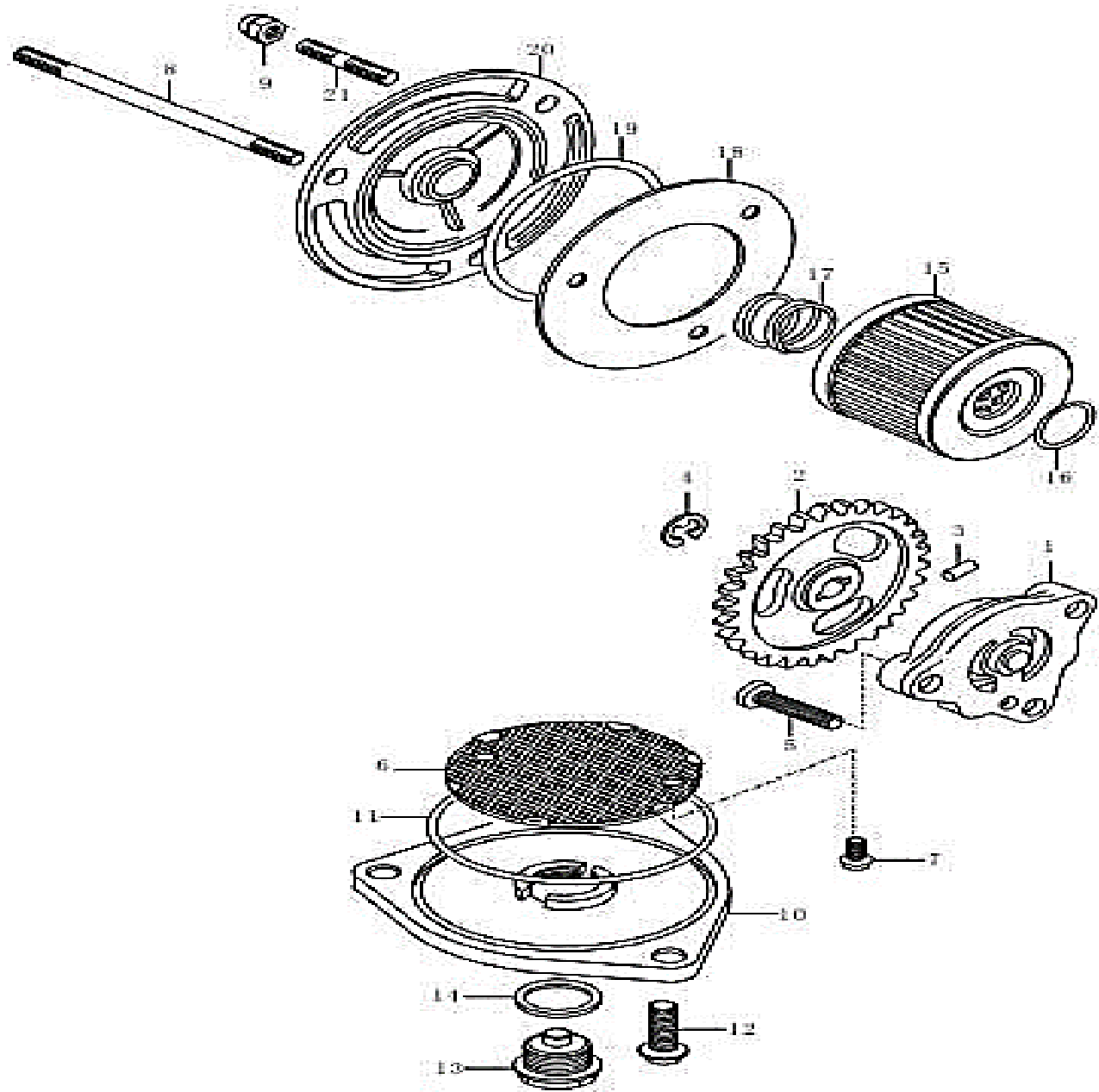
NO.	CODE	CN DESCRIPTION	EN DESCRIPTION	QTY	REMARKS
E7-1	12711QK01000	配气凸轮轴	Camshaft	1	
E7-2	12741QK01000	凸轮轴链轮	Sprocket	1	
E7-3	09202Q050802	销子5×8	Pin 5×8	1	
E7-4	12747QK01000	链轮压板	Washer	1	
E7-5	09100Q060808	螺栓M6×10.5	BoltM6×10.5	2	
E7-6	09390Q220801	C型环	C-Ring	1	
E7-7	12840QK01000	摇臂组合	Arm, valve rocker intake	2	
E7-8	09289Q050805	油封5.5×11×8.2	Oil seal 5.5×11×8.2	2	
E7-9	12931QK01000	气门弹簧座	Retainer, spring	2	
E7-10	12861QK01000	摇臂轴	Shaft,rocker arm	2	
E7-11	09280Q080803	O型圈1.9×8.7	O-Ring 1.9×8.7	2	
E7-12	09164Q120806	波形垫圈	Wave washer	2	
E7-13	09168Q060807	密封垫	Gasket	2	
E7-14	09135Q060803	螺栓M6×25	Bolt M6×25	2	
E7-15	12911QK01000	进气门	Valve, intake	1	
E7-16	12912QK01000	排气门	Valve, exhaust	1	
E7-17	12921QK17000	气门内弹簧	Spring set, valve	2	
E7-18	12922QK17000	气门外弹簧	Spring, valve outer	2	
E7-19	12932QK01000	气门锁夹	Cotter valve	4	
E7-20	12933QK01000	气门弹簧下托盘	Seat spring	2	

E08 CAM CHAIN (配气链条)



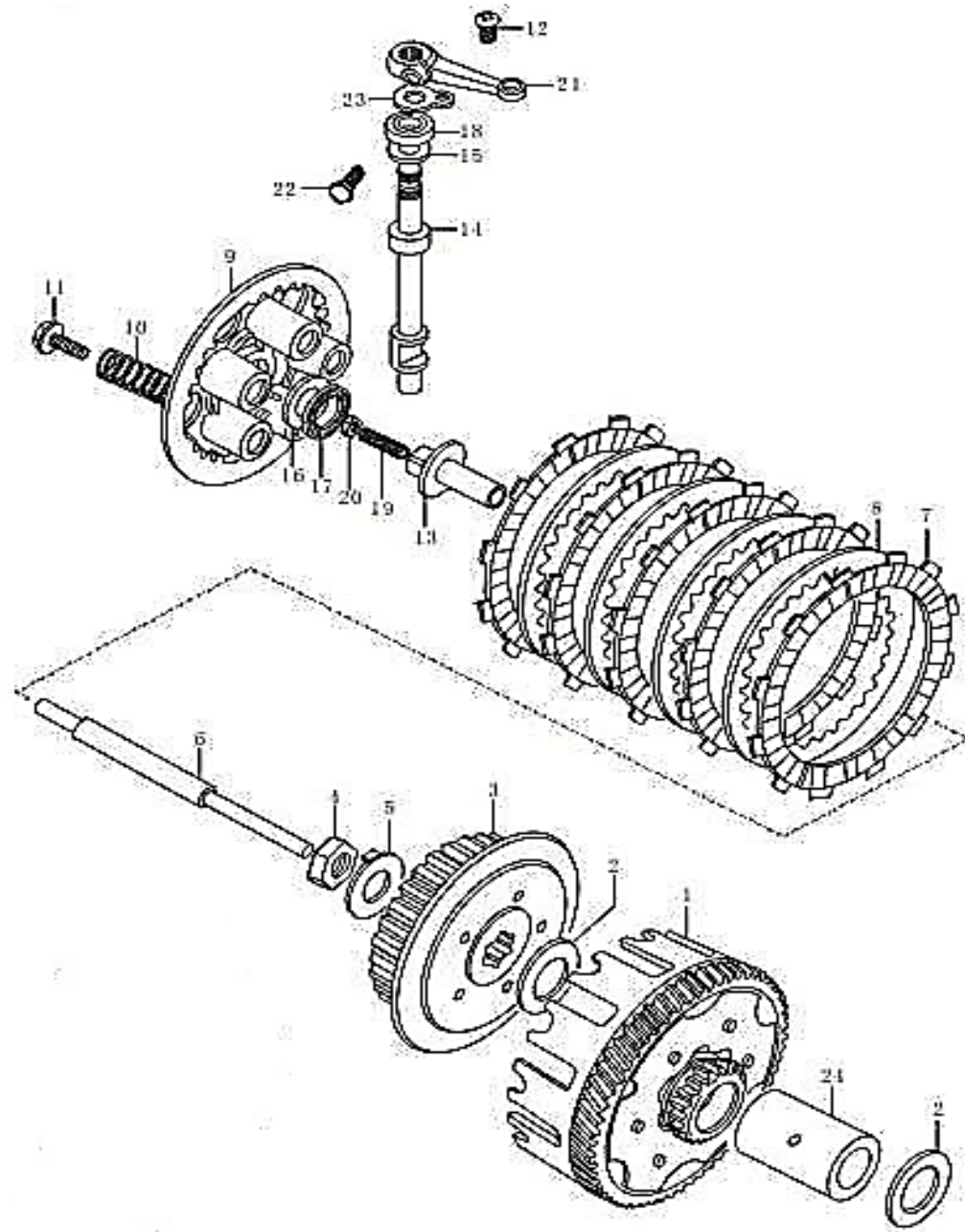
NO.	CODE	CN DESCRIPTION	EN DESCRIPTION	QTY	REMARKS
E8-1	12760QK01000	配气链条	Chain,cam shaft drive	1	
E8-2	12771QK01000	链条导板	Guide cam chain	1	
E8-3	12811QK01000	链条涨紧板	Tensioner cam chain	1	
E8-4	12812QK01000-016	螺栓M8×39.5	Bolt M8×39.5	1	
E8-5	09168Q080806	垫圈	Washer	1	
E8-6	12830QK01010-009	涨紧器组合	Adjuster tensioner	1	
E8-7	12837QK01020	涨紧器垫片	Gasket, adjuster	1	
E8-8	01604Q060202	螺栓M6×20	Bolt M6×20	2	
E8-9	05420Q022063	垫圈	Spring washer	2	

E09 OIL PUMP (机油泵)



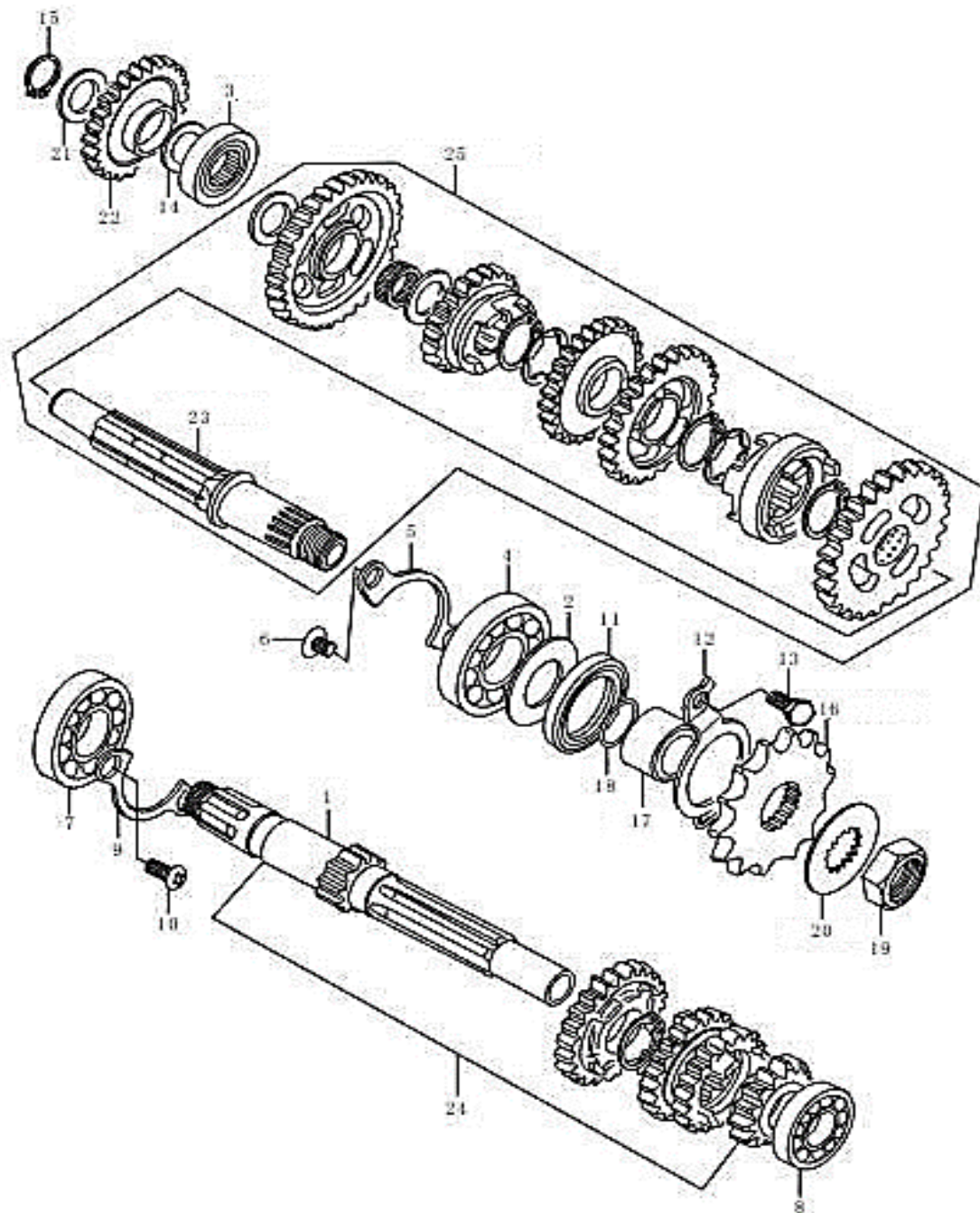
NO.	CODE	CN DESCRIPTION	EN DESCRIPTION	QTY	REMARKS
E9-1	16400QK01000	机油泵组合	Pump, engine oil	1	
E9-2	16331QK01000	机油泵齿轮	Gear, driven	1	
E9-3	09261Q020802	驱动销 (2.5×11.8)	Pin (2.5×11.8)	1	
E9-4	09383Q060801	E型环	Circlip	1	
E9-5	03414Q060251	螺钉M6×25	Screw M6×25	3	
E9-6	16520QK01000	机油滤网组合	Strainer, engine oil	1	
E9-7	03414Q350121	螺钉M5×12	Screw M5×12	2	
E9-8	03014Q060851	螺柱M6×85	Stud bolt M6×85	1	
E9-9	05406Q011065	盖形螺母M6	Nut M6	3	
E9-10	16523QK01000	滤网盖	Cap	1	
E9-11	09280Q600801	O型圈 (2.4×60.5)	O-Ring (2.4×60.5)	1	
E9-12	02204Q060201	螺栓M6×20	Bolt M6×20	3	
E9-13	09247Q140804	螺栓M14×12	Plug drain M14×12	1	
E9-14	09168Q060810	复合垫圈	Gasket	1	
E9-15	16510QK01000	机油过滤器组合	Filter engine oil	1	
E9-16	09280Q130803	O型圈 (1.9×13)	O-Ring (1.9×13)	1	
E9-17	09440Q180804	弹簧	Spring	1	
E9-18	16514QK01000	滤芯盖纸垫	Gasket	1	
E9-19	09280Q520801	O型圈 (2.4×52.6)	O-Ring (2.4×52.6)	1	
E9-20	16512QK01M00-009	机油滤芯盖	Cap	1	
E9-21	03014Q060121	双头螺柱M6*12	Stud bolt M6*12	2	

E10 CLUTCH (离合器)



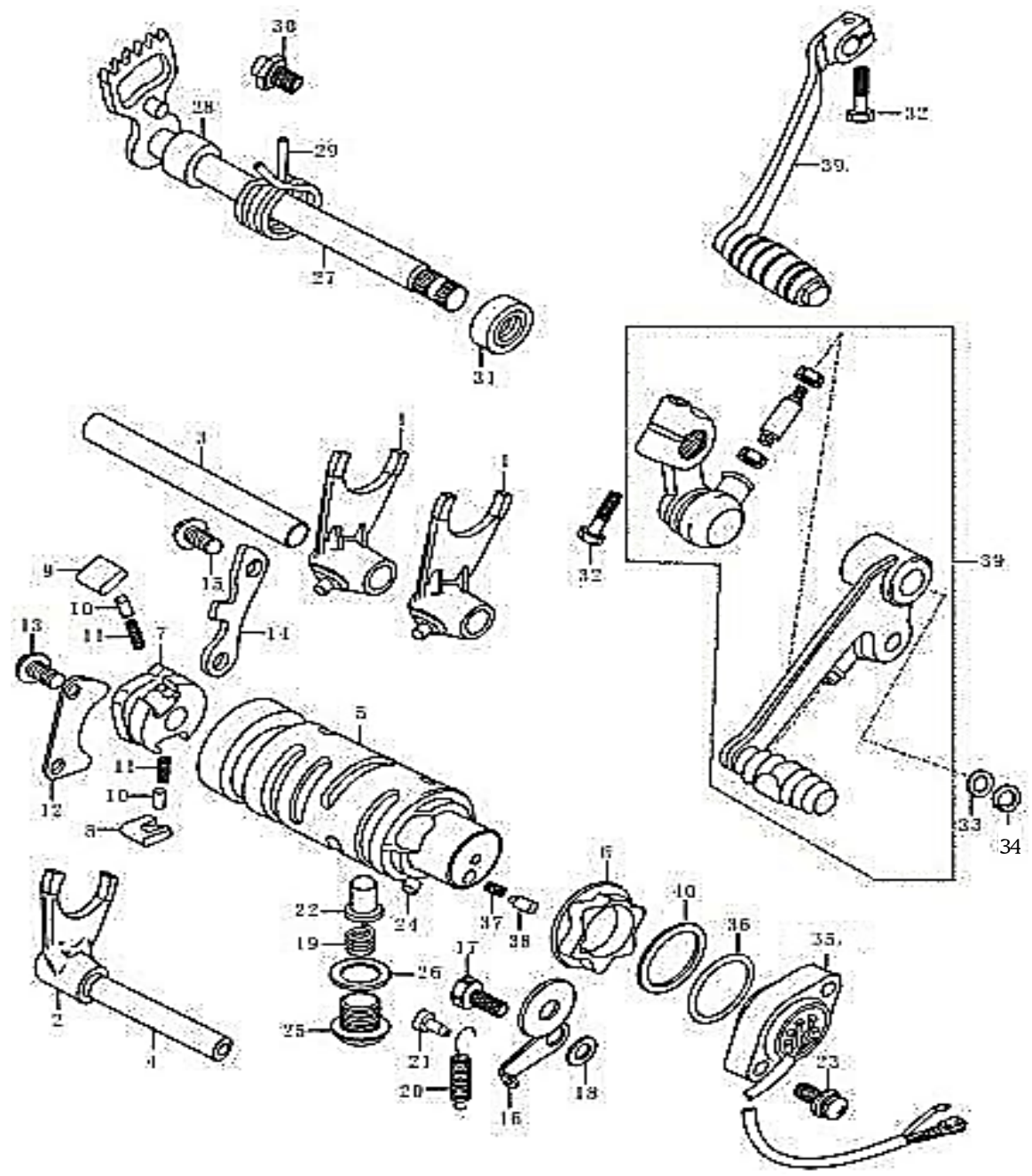
NO.	CODE	CN DESCRIPTION	EN DESCRIPTION	QTY	REMARKS
E10-1	21200QK01000	离合器大毂组合	Gear assy primary driven	1	
E10-2	09181Q200811	垫片	Washer	2	
E10-3	21411QK01000	离合器花键套	Hub, sleeve	1	
E10-4	09140Q160805	六角螺母M16	Nut M16	1	
E10-5	09168Q160802	保险垫圈	Lock washer	1	
E10-6	23110QK01000	离合器顶杆组合	Rod, push	1	
E10-7	21441QK01000	主动磨擦片	Plate,drive	5	
E10-8	21451QK01000	从动片	Plate,driven	4	
E10-9	21462QK01000	离合器弹簧盘	Disk,pressure	1	
E10-10	09440Q150802	离合器弹簧	Spring	5	
E10-11	09116Q050801	螺栓M5×16	Bolt M5×16	5	
E10-12	09124Q060801	螺栓M6×10	Bolt M6×10	1	
E10-13	23121QK01000	离合器顶柱	Peace	1	
E10-14	23122QK01000	离合器分离凸轮轴	Camshaft	1	
E10-15	09181Q100806	平垫圈	Washer	1	
E10-16	09160Q150801	平垫圈	Washer	1	
E10-17	09263Q150807	端面滚针轴承	Thrust, bearing	1	
E10-18	09283Q100804	油封	Oil seal	1	
E10-19	21464QK01000	顶丝M6×25	Screw M6×25	1	
E10-20	22117QK01000	螺母M6	Nut M6	1	
E10-21	23271QK01000	离合器摇臂	Arm, release	1	
E10-22	01604Q060165	螺钉M6×16	Bolt M6×16	1	
E10-23	23123QK01000	油封压板	Washer	1	
E10-24	21251QK01000	离合器大毂内套	Spacer	1	

E11 TRANSMISSION (变速器)



NO.	CODE	CN DESCRIPTION	EN DESCRIPTION	QTY	REMARKS
E11-1	24121QK01000	中间轴 (不含齿轮)	Countershaft	1	
E11-2	24359QK01000	轴承挡圈	Washer	1	
E11-3A	09263Q150805	驱动轴滚针轴承	Bearing RH	1	
E11-4	05510Q006204	轴承6204基本组	Bearing LH	1	
E11-5	24741QK01000	轴承挡板	Holder, bearing	1	
E11-6	03424Q060121	螺钉M6×12	Screw M6×12	2	
E11-7	09262Q200806	中间轴右端轴承	Bearing , RH	1	
E11-8	05530Q006002	中间轴左端轴承	Bearing LH	1	
E11-9	24741QK01000	轴承挡板	Holder, bearing	1	
E11-10	03424Q060121	螺钉M6×12	Screw M6×12	2	
E11-11	09283Q270803	驱动轴油封	Oil seal , LH	1	
E11-12	24751QK01000	驱动轴油封挡板镀锌	Holder oil seal	1	
E11-13	01704Q060101	螺栓M6×10	Bolt M6×10	2	
E11-14	09181Q150807	垫圈	Washer	1	
E11-15	05430Q021156	轴用弹性挡圈 15	Circlip 15	1	
E11-16	27511QK01000	链轮428 (NT: 13)	Sprocket (NT: 13)	1	
E11-17	27531QK01000	衬套	Spacer	1	
E11-18	09280Q190804	O型环 19*2.4	O-Ring 19*2.4	1	
E11-19	09140Q160807	螺母M16×1.5	Nut M16×1.5	1	
E11-20	09167Q200808	止动垫圈	Washer	1	
E11-21	09181Q150807	垫圈	Washer`	1	
E11-22	26260QK01000	起动机惰轮组合	Idler pulley	1	
E11-23A	24131QK01010	驱动轴	Driveshaft	1	
E11-24	24120QK01000	中间轴组合(含齿轮)	Countershaft	1	
E11-25A	24130QK01010	驱动轴组合 (含齿轮)	Driveshaft	1	

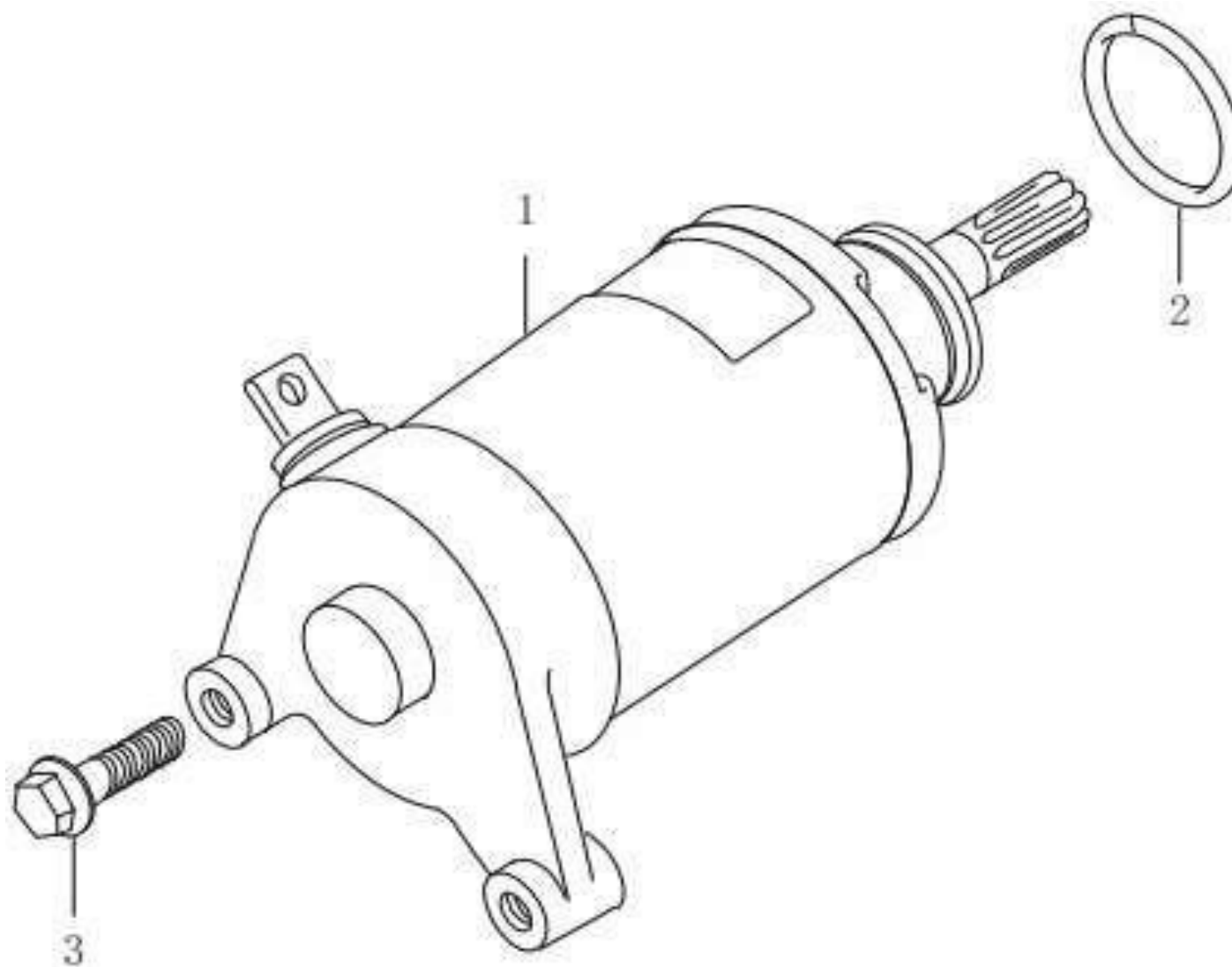
E12 GEAR SHIFTING (变档)



NO.	CODE	CN DESCRIPTION	EN DESCRIPTION	QTY	REMARKS
E12-1	25211QK01000	变档拨叉 I	Fork,gear shifting (I)	2	
E12-2	25231QK01000	变档拨叉Ⅲ	Fork gear shifting (Ⅲ)	1	
E12-3	25411QK01000	变档拨叉轴 I	Shaft, fork (I)	1	
E12-4	25421QK01000	变档拨叉轴Ⅱ	Shaft fork (Ⅱ)	1	
E12-5	25310QK01000	变档凸轮组合	Cam, gear shifting	1	
E12-6	25381QK01000	凸轮定位盘	Plate, stopper	1	
E12-7	25322QK01000	变档摇臂从动齿块	Gear cam driven	1	
E12-8	25323QK01000	千斤 I	Pawl, (I)	1	
E12-9	25324QK01000	千斤Ⅱ	Pawl, (Ⅱ)	1	
E12-10	09202Q050803	千斤轴销	Pin	2	
E12-11	09440Q040806	千斤轴销弹簧	Spring	2	
E12-12	25331QK01000	凸轮挡板	Lifter, pawl	1	
E12-13	03424Q060121	螺钉M6×12	Screw M6×12	2	
E12-14	25341QK01000	凸轮保持架	Guide, cam	1	
E12-15	03424Q060121	螺钉M6×12	Screw M6×12	2	
E12-16	25350QK01000	变档凸轮定位板组合	Stopper, cam	1	
E12-17	09103Q060813	螺栓M6×16	Bolt M6×16	1	
E12-18	09181Q060801	垫圈I	Washer I	1	
E12-19	09440Q110803	凸轮顶销弹簧	Spring	1	
E12-20	09443Q080801	变档限位拉簧	Spring	1	
E12-21	09201Q040802	柱销	Hook	1	
E12-22	25351QK01000	凸轮顶销	Stopper, neutral	1	
E12-23	03414Q050205	螺钉M5×20	Screw M5×20	2	
E12-24	04522Q040061	销子4×6	Pin4×6	1	
E12-25	09247Q140803	螺塞	Plug, cam stopper	1	
E12-26	09168Q130801	复合垫圈	Washer	1	
E12-27	25510QK01000	变档轴组合	Shaft, gear shifting	1	
E12-28	09180Q120803	变档轴套	Spacer	1	
E12-29	09444Q260802	变档轴扭簧	Spring	1	
E12-30	25671QK01000	变档回位销	Stopper, arm	1	

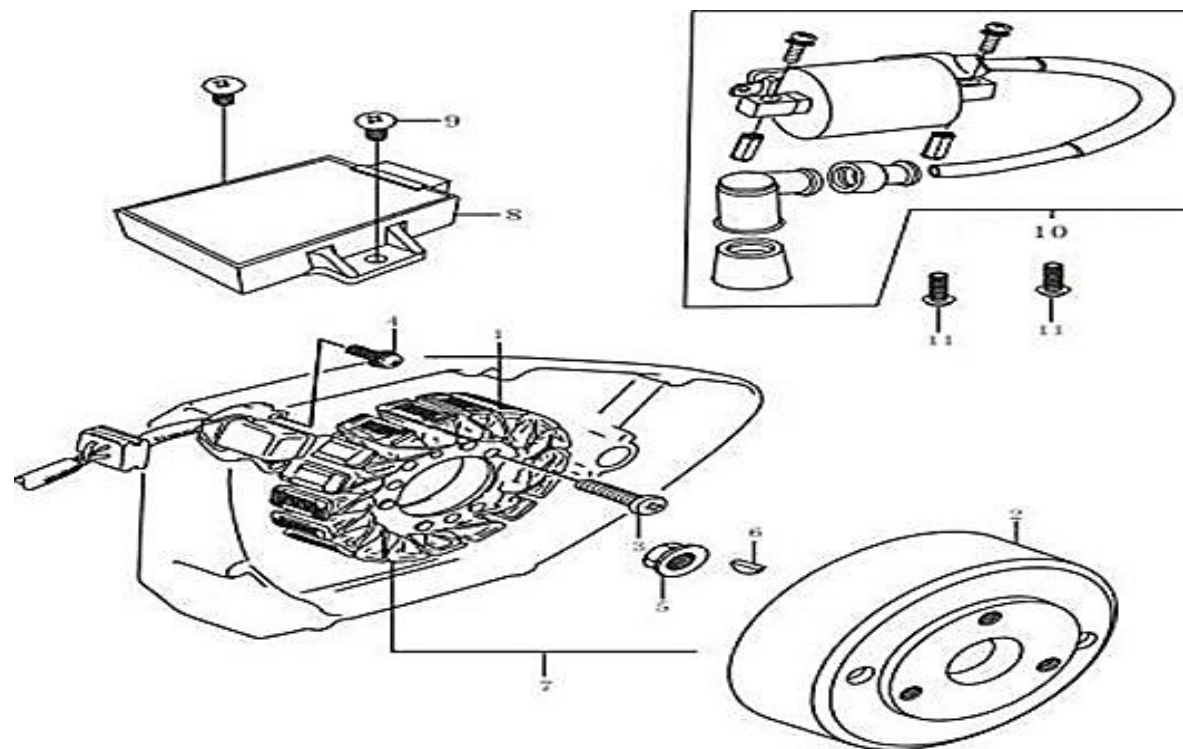
NO.	CODE	CN DESCRIPTION	EN DESCRIPTION	QTY	REMARKS
E12-31	09283Q120802	变档轴油封	Oil seal	1	
E12-32	01102Q060201	螺栓M6×20	Bolt M6×20	1	
E12-33	09160Q120002	垫圈II	Washer II	1	
E12-34	05430Q021126	轴用弹性挡圈	Circlip	1	
E12-35	37720QK01000	变档开关组合	Terminal base assy	1	
E12-36	09280Q260802	O型圈24×26.2	O-Ring 24×26.2	1	
E12-37	09440Q040804	轴销压簧	Spring	1	
E12-38	09202Q050804	轴销	Contact	1	
E12-39	25600QMN2000	变档杆组合	Lever assy	1	
E12-40	09181Q250810	平垫圈	Washer	1	

E13 STARTING MOTOR (起动电机)



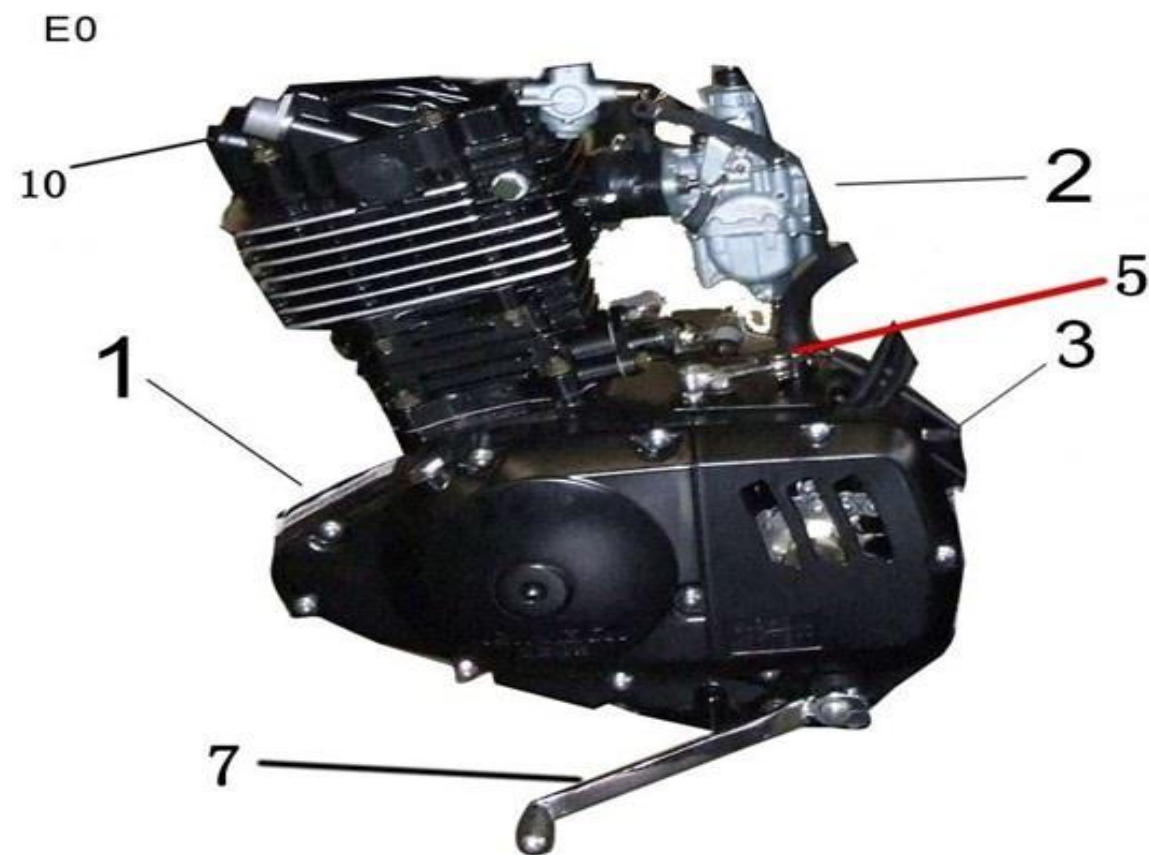
NO.	CODE	CN DESCRIPTION	EN DESCRIPTION	QTY	REMARKS
E13-1	31100QK01000	起动电机总成	Motor assy starting	1	
E13-2	09280Q250804	O型圈 (3*24.5)	O-Ring (3*24.5)	1	
E13-3	02104Q060305	螺栓M6×30	Bolt M6×30	2	

E14 ELECTRICAL (电器件)



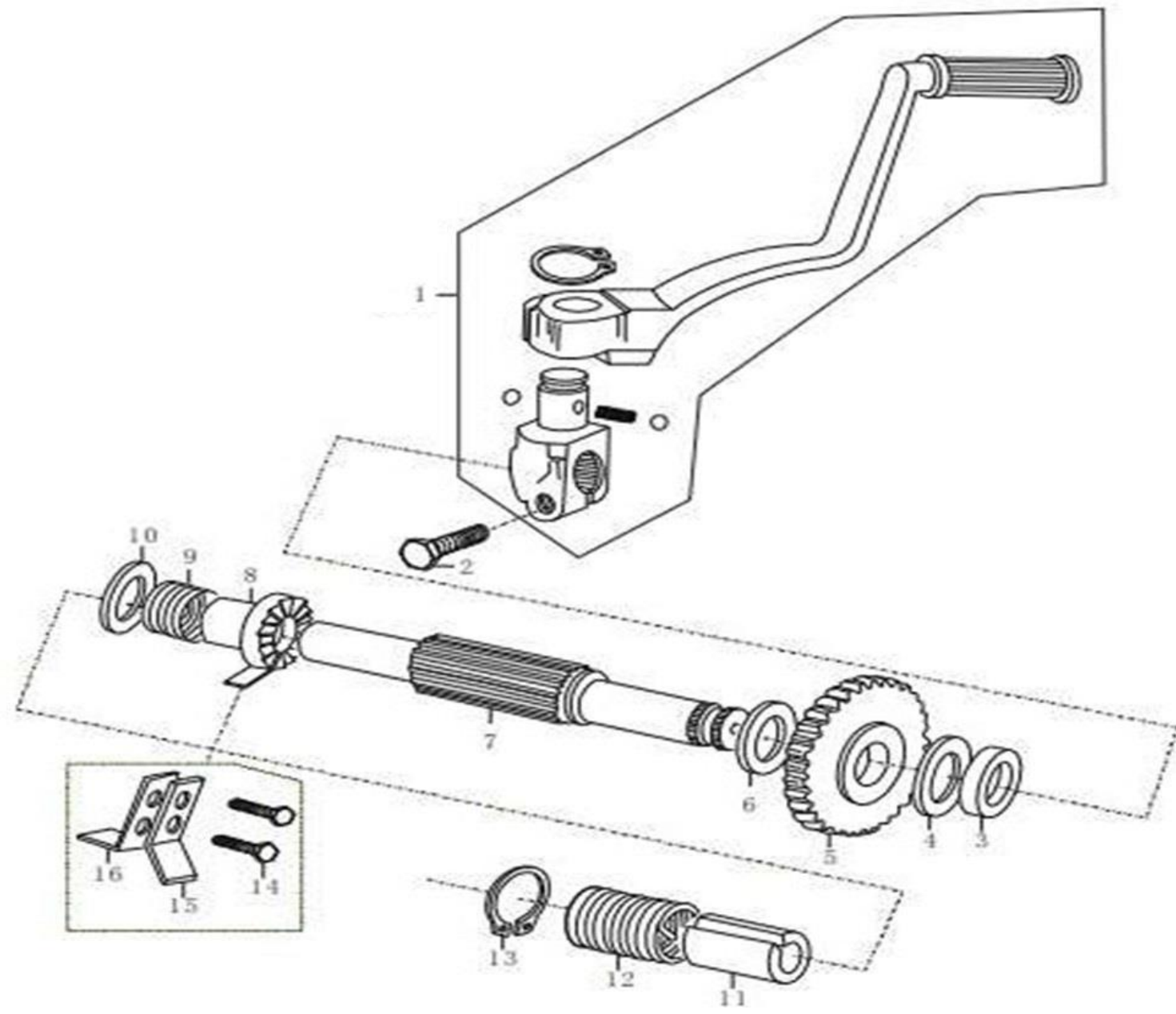
NO.	CODE	CN DESCRIPTION	EN DESCRIPTION	QTY	REMARKS
E14-1	32101QK01000	定子组合	Stator assy	1	
E14-2	32102QK01000	磁电机转子	Rotor, flywheel	1	
E14-3	03434Q050255	螺钉M5×25	Screw M5×25	3	
E14-4	09125Q040801	螺钉M 4 ×12	Screw M 4 ×12	2	
E14-5	05404Q021104	螺母M10	Nut M10	1	
E14-6	05440Q030132	半圆键3×13	Key3×13	1	
E14-7	32100QK01000	磁电机组	Magneto	1	
E14-8	32900QK01000	点火器组合	CDI unit	1	
E14-9	09139Q060002	螺钉M6×16	Screw M6×16	2	
E14-10	1180300010000	QM125-2高压包	Coil assy, ignition	1	
E14-11	03451Q350124	螺钉M5×12	Screw M5×12	2	

E15 ENGINE ASS'Y\CARBURETOR ASS'Y (发动机\化油器)



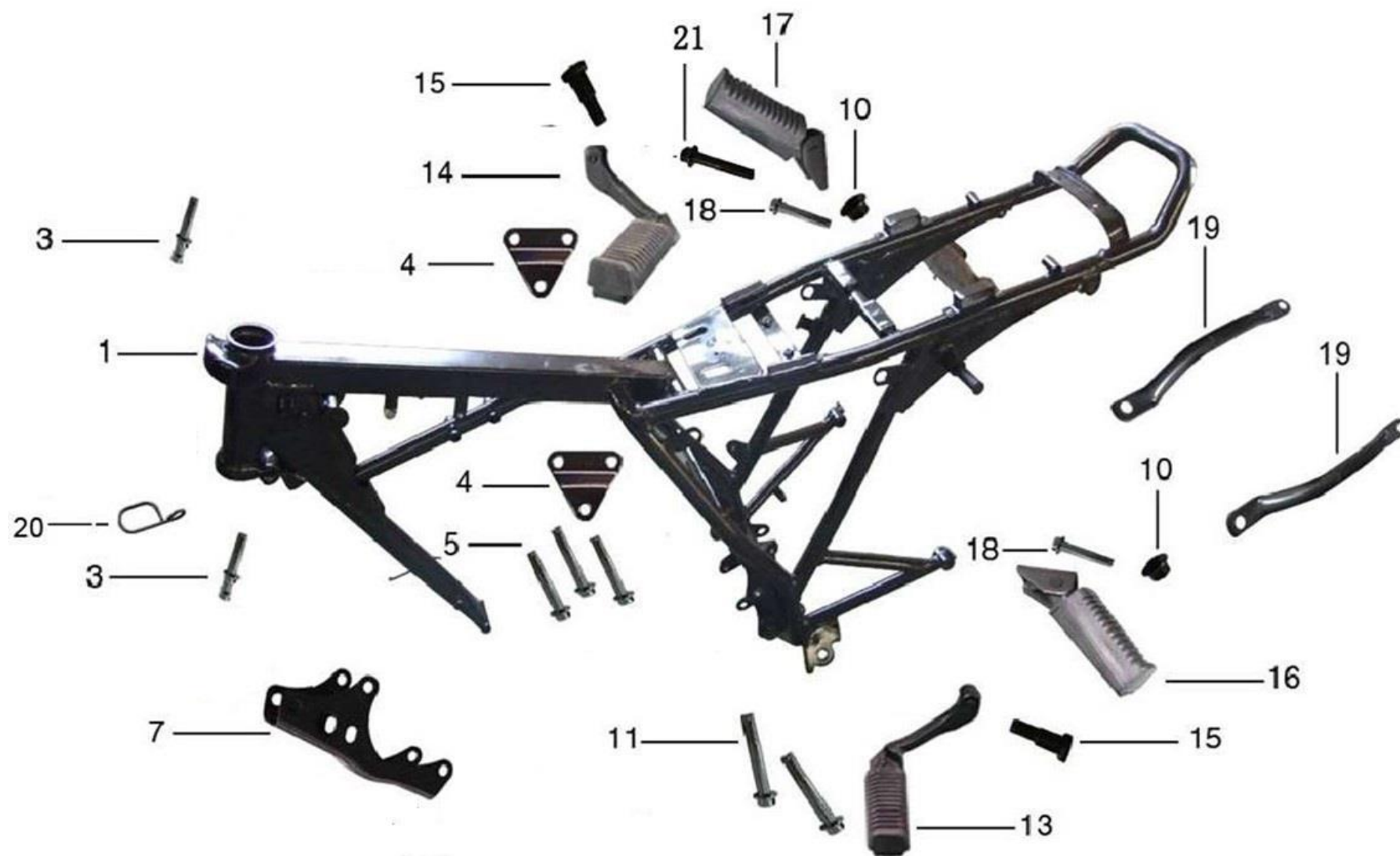
NO.	CODE	CN DESCRIPTION	EN DESCRIPTION	QTY	REMARKS
E01-1	6102090401502	GS王柱塞黑机,非补双启,13T	ENGINE ASS'Y	1	
E01-2	13200QK01090	化油器	CARBURETOR ASS'Y	1	
E01-3	6250001004002	GS链轮罩(含螺栓)黑色	REER COVER	1	
E01-5	6260050090000	离合器摇臂	ARM, CLUTCH RELEASE	1	
E01-7	6250047000523	起动杆组合 (QM200GY)	KICK START LEVER	1	
E01-10	6201999100000	转速孔堵头	PLUG	1	

E16 KICK STARTER (反冲起动)



NO.	CODE	CN DESCRIPTION	EN DESCRIPTION	QTY	REMARKS
E16-1	6250047000523	起动杆组合	Lever kick	1	
E16-2	01604Q080251	螺栓M8×25	Bolt M8×25	1	
E16-3	09283Q160804	油封	Oil seal	1	
E16-4	09160Q160807	推力垫圈	Washer	1	
E16-5	26240QK01000	起动驱动齿轮组合	Gear, starter drive	1	
E16-6	09160Q200805	垫圈	Washer	1	
E16-7	26211QK01000	反冲起动轴	Shaft kick starter	1	
E16-8	26231QK01000	起动结合子	Ratchet Wheel	1	
E16-9	09440Q310802	反冲起动弹簧	Spring	1	
E16-10	09160Q170804	垫圈	Washer	1	
E16-11	26221QK01000	弹簧导套	Guide shaft spring	1	
E16-12	26212QK01000	起动轴回位弹簧	spring	1	
E16-13	09380Q160803	弹性挡环	Spring	1	
E16-14	01704Q080201	螺栓M8×20	Bolt M8×20	2	
E16-15	26232QK01000	反冲起动导板	Plate	1	
E16-16	26233QK01000	反冲起动挡板	Plate	1	

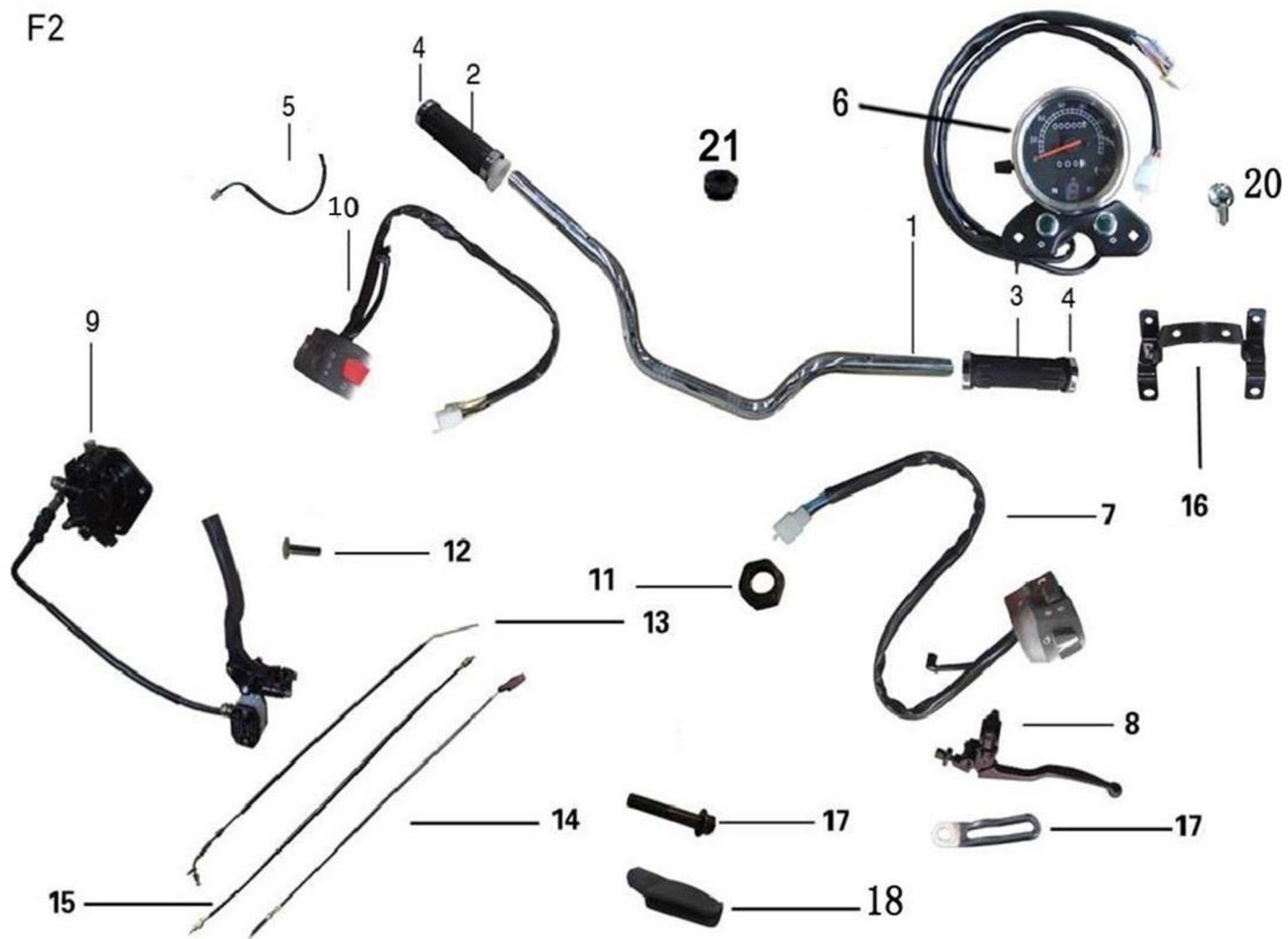
F1



NO.	CODE	CN DESCRIPTION	EN DESCRIPTION	QTY	REMARKS
F1-01	1031400073000	QM250-2X车架	FRAME,PART 1	1	
F1-03	7082803010002	抽芯铆钉 铝材	RIVET (φ3.0×10)	2	
F1-04	1030300030000	QM125-2发动机吊板	PLATE,ENGINE RIGHT UP HANGER	2	
F1-05	7013008050168	六角法兰螺栓蓝白锌	BOLT,HEX FLANGE(M8×50)	3	
F1-07	1030300020000	QM125-2发动机托架	PLATE,ENGINE FR.HANGER	1	
F1-10	7034310000247	六角法兰螺母军绿	NUT (M10×1.25)	2	
F1-11	7013008090168	六角法兰螺栓蓝白锌	BOLT,HEX FLANGE (M8×90)	2	
F1-13	1041400190000	QM250-2X前左脚踏组合	BAR COMP.,STEP L.	1	
F1-14	1041400200000	QM250-2X前右脚踏组合	BAR COMP.,STEP R.	1	
F1-15	7013012030268	六角法兰螺栓蓝白锌	BOLT,HEX FLANGE	2	
F1-16	1260700040204	QM125-2V后左搁脚组合	BAR COMP.,PILLION STEP ,L	1	
F1-17	1260700050204	QM125-2V后右搁脚组合	BAR COMP.,PILLION STEP ,R	1	
F1-18	7012810025267	六角法兰螺栓军绿	BOLT,HEX FLANGE (M10×55)	2	
F1-19	1041400120000	QM250-2X后扶手	HANDLE COMP,PILLION RIDER	2	
F1-20	1040400211000	QM125-10K离合线夹	CLAMPER,CLUTCH CABLE	1	
F1-21	7012810045267	六角法兰螺栓军绿	HEXAGON FLANGE BOLT	1	

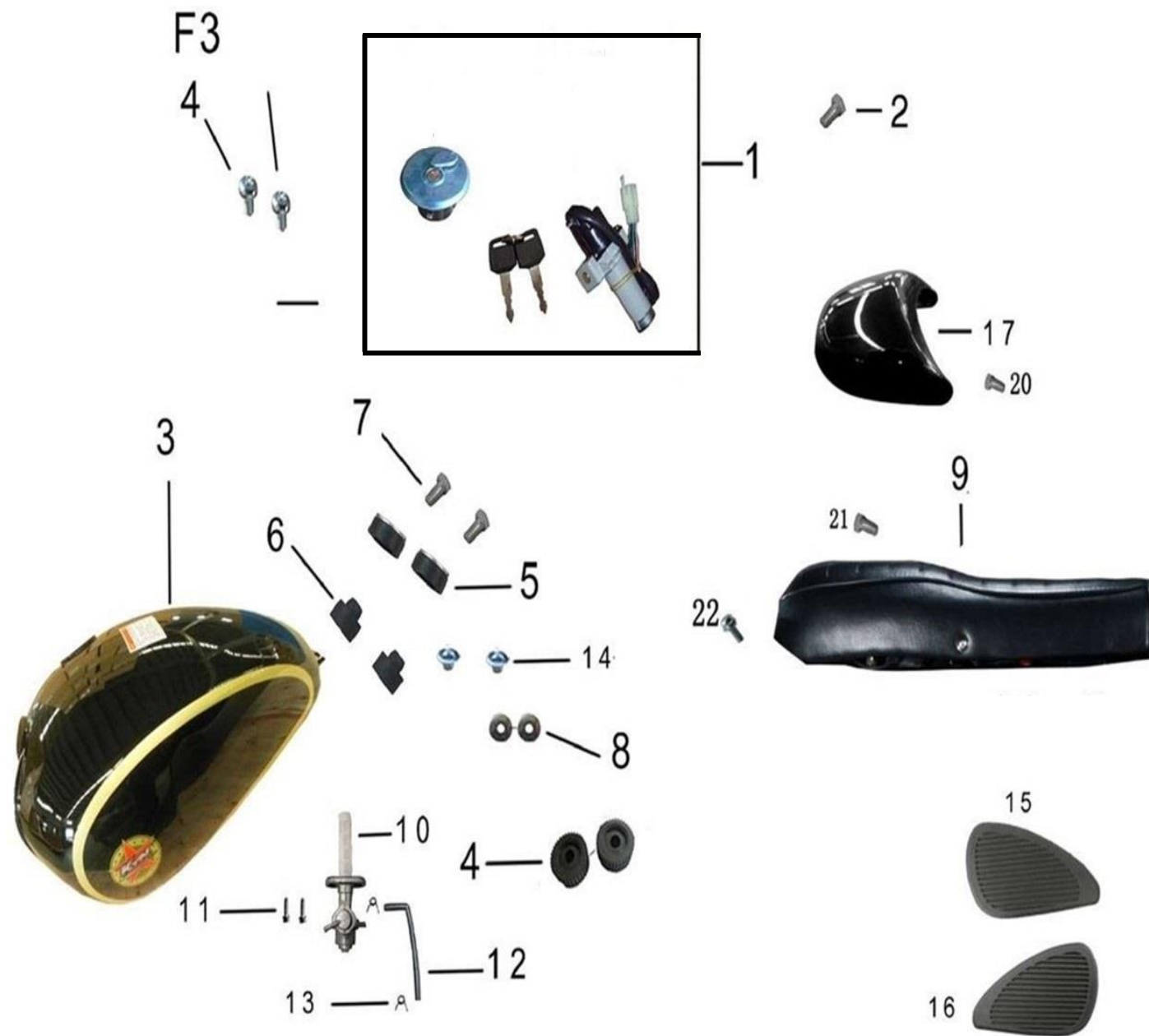
F2- SWITCH\CABLE\HANDLE\HANDLE LEVER\BRAKE (开关\导线\方向把\手把拉杆\碟刹)

F2



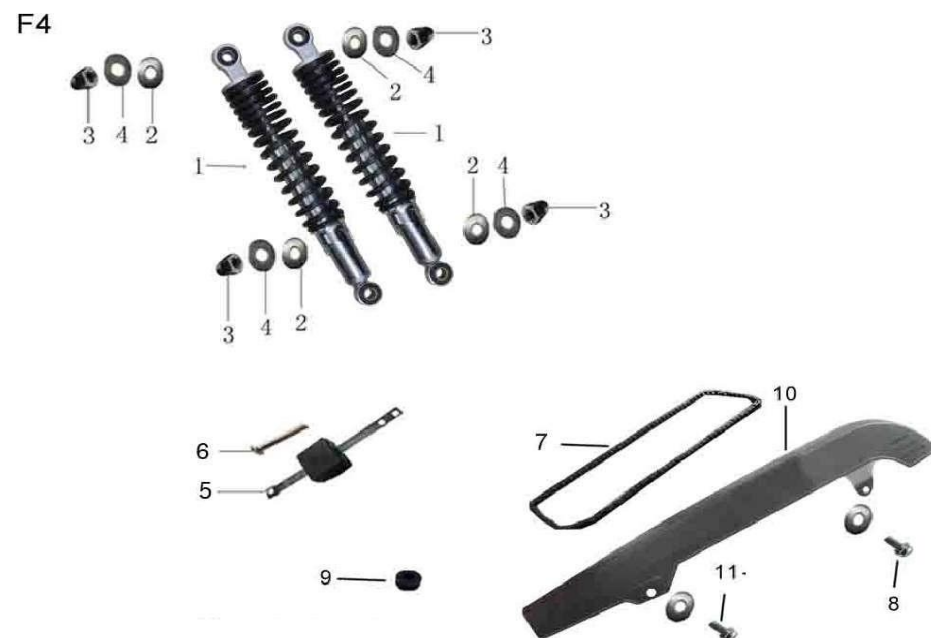
NO.	CODE	CN DESCRIPTION	EN DESCRIPTION	QTY	REMARKS
F2-1	1040400260000	QM125-3B(E)方向把	HANDLE COMP.,STEERING (HIGH HANDLE BAR)	1	BLACK
F2-1	1130100070000	QM125-2V方向把	HANDLE COMP.,STEERING (LOW HANDLE BAR)	1	SILVER
F2-2	1260300231000	QM125-2双火右旋把胶组合	GRIP,R.HANDLE	1	
F2-3	1260300221000	QM125-2双火左握把胶	GRIP,L.HANDLE	1	
F2-4	1139900008000	平衡块(小头电镀)	WEIGHT BALANCE MASS	2	
F2-5	1180300190000	QM125-2前刹车开关线	FRONT BRAKE SWTICH CABLE	1	
F2-6	1161000012000	QM125GY-2D仪表	SPEEDOMETER ASSY	1	
F2-7	1180300123000	QM125-10B(B)L左手把开关	SWITCH COMP.,L.	1	
F2-8	1180200110000	QM125-7A左闸把	CLUTCH LEVER ASSY	1	
F2-9	1141400010000	QM250-2X前碟刹组合	DISK BRAKE ASS;Y,FRONT (HIGH HANDLE BAR)	1	
F2-9	1141400011000	QM250-2X前碟刹组合	DISK BRAKE ASS;Y,FRONT (LOW HANDLE BAR)	1	
F2-10	1180300231000	QM125-2右手把开关	SWITCH COMP.,R	1	
F2-12	7013006012167	六角法兰螺栓 军绿	BOLT,HEX FLANGE (M6×12)	1	
F2-13	1280400049000	QM125-2X油门线	CABLE COMP.,THROTTLE (HIGH HANDLE BAR)	1	
F2-13	1280700010000	QM125-2V油门线	CABLE COMP.,THROTTLE (LOW HANDLE BAR)	1	
F2-14	1281000020000	QM125GY-2D离合线	CABLE COMP.,CLUTCH (HIGH HANDLE BAR)	1	
F2-14	1281200021000	QM125-2T离合线	CABLE COMP.,CLUTCH (LOW HANDLE BAR)	1	
F2-15	1281400030000	QM250-2X里程线	CABLE COMP.,SPEEDOMETER	1	
F2-16	1041000070000	QM125GY-2D仪表支架	BRACKET	1	
F2-17	1260300330000	QM125-2离合器下线夹	CLAMPER,CLUTCH CABLE	1	
F2-18	1260200010000	QM125-7A手柄护套	GRIP,L.HANDLE	1	
F2-20	7024908020167	内六角圆柱头螺钉 军绿	HEXAGON SCREW,SPEEDOMETER BRACKET	2	
F2-21	1260300300000	QM125-2扭力杆胶垫	RUBBER CUSHION,TORQUE BAR	4	

F3 - FUEL TANK\SEAT\REAR CARRIER (油箱\坐垫\后货架)



NO.	CODE	CN DESCRIPTION	EN DESCRIPTION	QTY	REMARKS
F3-01	1181400152000	QM250-2X套锁	KEY SET	1	
F3-02	7021805012158	盘头螺钉	SCREW,PAN (M5×12)	2	
F3-03	1241400210835	QM250-2X油箱(B款) (出口)		1	
	1241400021501	QM250-2X油箱(B款) (出口)	FULE TANK, BLACK	1	
F3-04	1260300010000	QM125-2油箱前缓冲胶	POSITION FIXING WASHER	2	
F3-05	1261700020000	油箱后缓冲上胶圈	CUSHION,UPPER REAR	2	
F3-06	1261700010000	油箱后缓冲T形胶圈	CUSHION,LOWER REAR	2	
F3-07	7012406040168	六角法兰螺栓	BOLT,HEX FLANGE (M6×40)	2	
F3-08	7052706222038	加大垫圈蓝白锌	WASHER ,PLAIN φ×6	2	
F3-09	1211400012000	QM250-2X座垫	SEAT ASS'Y	1	
F3-10	1040300130000	QM125-2油箱开关	COCK ASS'Y,FUEL	1	
F3-11	7012806016168	六角法兰螺栓蓝白锌	BOLT,HEX FLANGE (M6×16)	2	
F3-12	1260300322000	QM125-2油管	TUBE ASS'Y,VACUUM (120mm)	1	
F3-13	1260300980000	卡环φ7*1.1	CLIP ANNULUS φ7*1.1	2	
F3-14	1260300040000	QM125-2油箱后胶圈衬套	CLIP ANNULUS Φ7-Φ10×20	2	
F3-15	1261400050000	QM250-2X油箱左装饰皮	LEFT FUEL TANK DECORATE RUBBER	1	
F3-16	1261400060000	QM250-2X油箱右装饰皮	RIGHT FUEL TANK DECORATE RUBBER	1	
F3-17	1221400034002	QM250-2X座垫装饰罩	SEAT COVER (BLACK)	1	
F3-17	1221400032301	QM250-2X座垫装饰罩	SEAT COVER (ORANGE)	1	
F3-20	7070042012007	十字槽自攻螺钉 军绿	CROSS SCREW, SEAT COVER	2	
F3-21	7025006012164	QM250-2X座垫销子	PIN,SEAT	2	
F3-22	7630208025164	六角球头螺栓 白铬	HEXAGON BOLT,TURNING LIGHT BRACKET	2	

F4-CHAIN CASE\CHAIN DRIVE \REAR SHOCK ABSORBER (链罩\链条\后减震器总成)



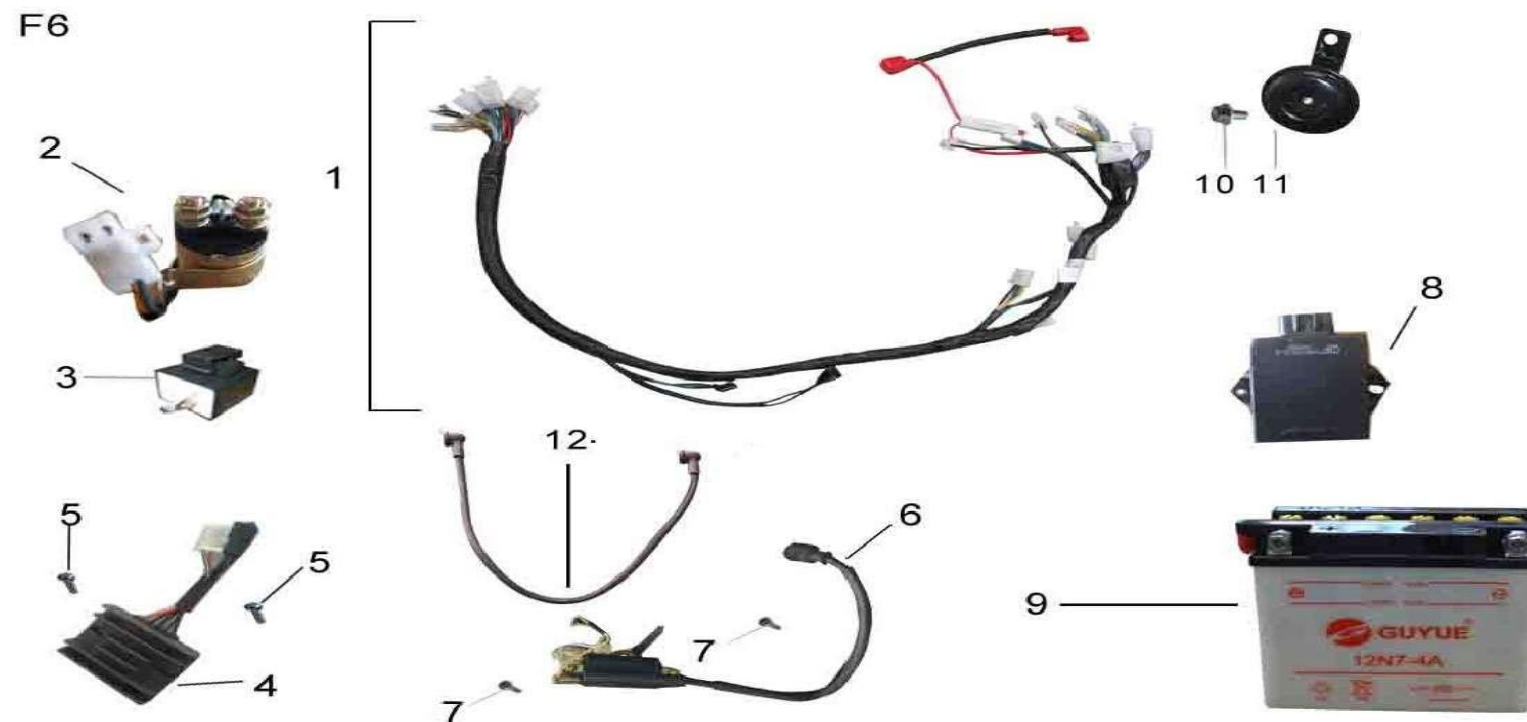
NO.	CODE	CN DESCRIPTION	EN DESCRIPTION	QTY	REMARKS
F4-01	1100400053903	QM125-3B(E)后减震器组合	REAR SHOCK ABSORBER	2	
F4-02	7050210302538	垫圈蓝白锌	WASHER,PLAIN (M10)	4	
F4-03	7033710000244	盖形螺母白铬	NUT,CAP (M10×1.25)	4	
F4-04	7050312242538	垫圈蓝白锌	WASHER,PLAIN (φ12)	4	
F4-05	1260300100000	QM125-10B链条滑块(带铁)	CHAIN,SLIDE PIECE	1	
F4-06	7070042016007	十字槽自攻螺钉军绿	Screw	1	
F4-07	1070200040000	链条	CHAIN DRIVE	1	
F4-08	7111106016167	十字小盘头大平垫组合螺钉军绿	CROSS BOLT ASSY. CHAIN COVER REAR	2	
F4-09	1260300190000	QM125-2链罩橡胶圈	CUSHION,INNER	1	
F4-10	1221000012000	QM125GY-2D链盒(改进)	CASE,UPPER HALF DRIVE CHAIN	1	
F4-11	7111106012167	十字小盘头大平垫组合螺钉军绿	CROSS BOLT ASSY. CHAIN COVER FRONT	1	

F5



NO.	CODE	CN DESCRIPTION	EN DESCRIPTION	QTY	REMARKS
F05-1	1170400056000	QM125-2B大灯	HEAD LIGHT ASSY	1	
F05-2	1171000010000	QM125GY-2D前左转向灯	WINKER ASSY L FRONT	1	
F05-3	1171000020000	QM125GY-2D前右转向灯	WINKER ASSY R FRONT	1	
F05-4	1171000030000	QM125GY-2D后左转向灯	WINKER ASSY L REAR	1	
F05-5	1171000040000	QM125GY-2D后右转向灯	WINKER ASSY R REAR	1	
F05-6	1171000060000	QM125GY-2D尾灯	TAIL LAMP ASSY	1	
F05-7	1041000080000	QM125GY-2D尾灯支架	TAIL LAMP BRACKET	1	
F05-8	1260300180000	QM125-2后挡泥板胶圈	CUSHION, REAR FENDER REAR	2	
F05-9	7050206181637	垫圈军绿	WASHER,PLAIN (M10)	2	
F05-10	7511806016167	十字大扁头螺钉军绿	BOLT M6×16	2	
F05-11	1261000920000	QM125GY-2D后反射器	REAR REFLECTOR	1	
F05-12	1041400010000	QM250-2X大灯支架	BRACKET, HEADLAMP	2	
F05-13	1041000110000	QM125GY-2D后左转向灯支架	BRACKET, REAR TURNING	1	
F05-14	1041000120000	QM125GY-2D后左转向灯支架	BRACKET, REAR TURNING LIGHT, R	1	
F05-15	1260200152000	QM125-7A大灯支架胶	RUBBER,HEAD LIGHT BRACKET	2	
F05-16	1041300050205	QM125-10M大灯支架连接板	LINK PLATE,HEAD LIGHT BRACKET	2	
F05-17	7013006020167	六角法兰螺栓 军绿	HEXAGON FLANGE BOLT	3	
F05-18	7032606000147	六角法兰螺母 军绿	HEXAGON FLANGE BOLT	13	
F05-19	7523706017147	长盖形螺母 军绿	ACORN NUT	2	
F05-20	7702208020164	球面六角弹平垫组合螺栓 镀铬	HEXAGON BOLT ASSY	2	
F05-21	7511806012167	十字大扁头螺钉 军绿	CROSS SCREW	6	
F05-22	7032606000148	六角法兰螺母 蓝白锌	HEXAGON FLANGE BOLT	2	

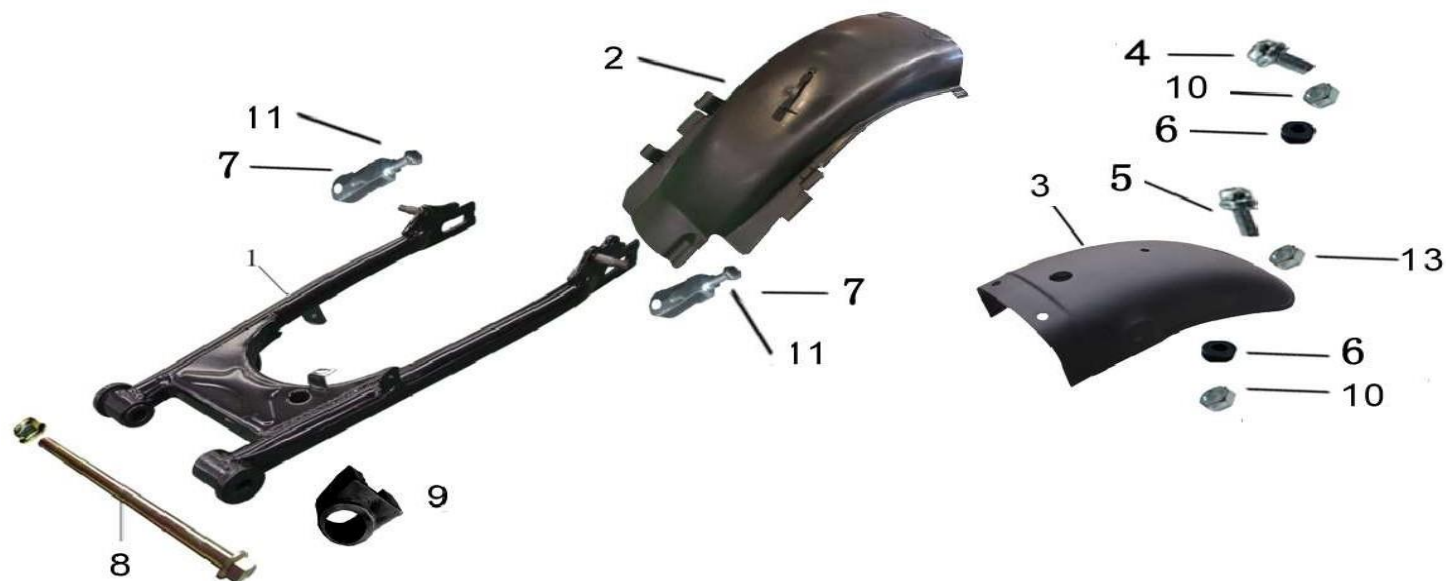
F6-WIRE HARNESS (主电缆)



NO.	CODE	CN DESCRIPTION	EN DESCRIPTION	QTY	REMARKS
F6-01	1180400600000	QM125-3B(E)主线束	WIRE HARNESS	1	
F6-02	1180300030000	QM125-2起动继电器	SWITCH ASS'Y,STARTER	1	
F6-03	1180300050000	QM125-2闪光器	FLASH UNIT	1	
F6-04	1180300040000	QM125-2整流稳压器	RECTIFIER COMP.,REGULATOR	1	
F6-05	7011006020168	十字槽凹穴六角螺栓蓝白锌	SCREW,PAN (M6×16)	1	
F6-06	1180300010000	QM125-2高压包	COIL COMP.,IGNITION	1	
F6-07	7021805012158	十字槽盘头螺钉蓝白锌	SCREW,PAN (M5×12)	2	
F6-08	1180300020000	QM125-2点火器	C.D.I. UNIT	1	
F6-09	1150000041000	QM125-2蓄电池	BATTERY	1	
F6-10	7012808016167	六角法兰螺栓军绿	BOLT,HEX FLANGE (M8×16)	1	
F6-11	1181000060000	QM125GY-2D喇叭(E4 000422)	HORN	1	
F6-12	1180400100000	起动马达线	LEAD WIRE, STARTING MOTOR	1	

F7 - SWING ARM ASS'Y,RR\ARM,RR\REAR FENDER (后平叉\扭力杆\后挡泥板)

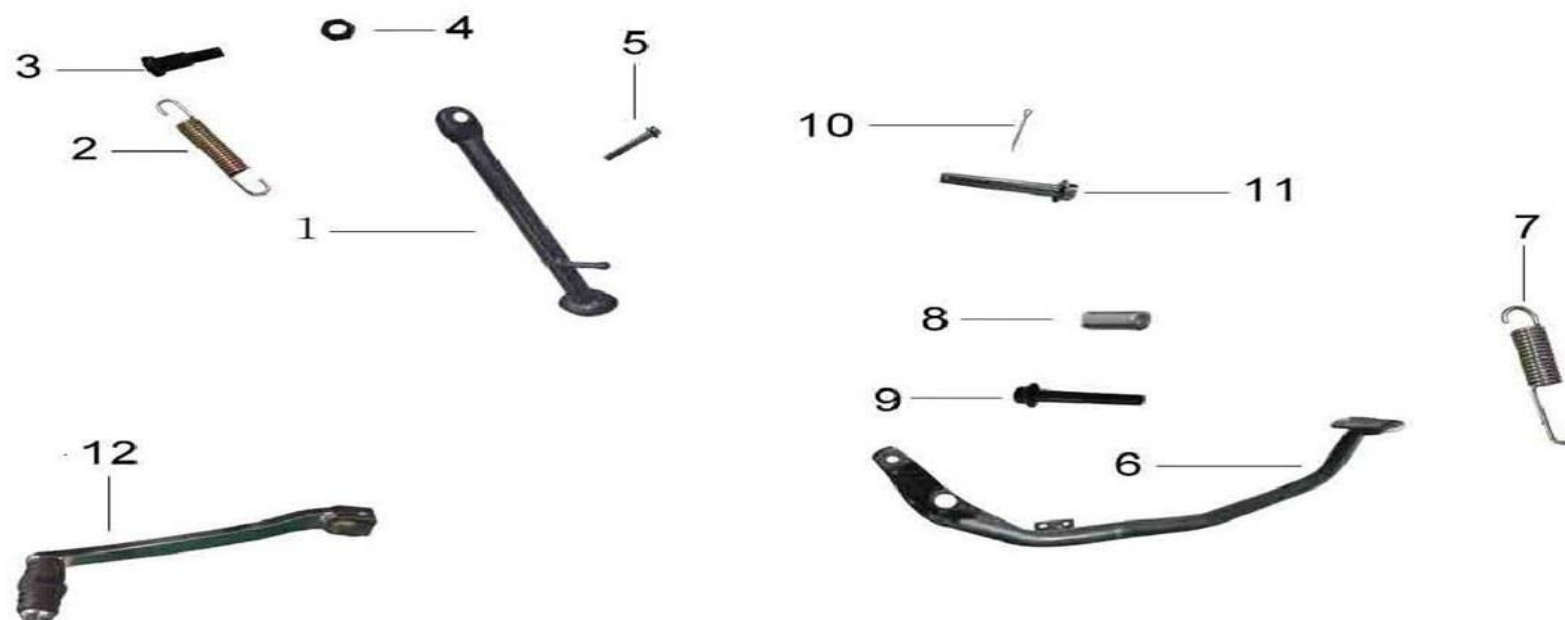
F7



NO.	CODE	CN DESCRIPTION	EN DESCRIPTION	QTY	REMARKS
F7-01	1041400140000	QM250-2X后平叉(碟刹)	SWING ARM ASS'Y,RR.	1	
F7-02	1220300041000	QM250-2X后挡泥板前部	BODY,REAR FENDER, FRONT	1	
F7-03	1221400110000	QM250-2X后挡泥板后段	FENER,REAR	1	
F7-04	7012808040167	GB5787-00 2	BOLT M8×40	2	
F7-05	7013006016167	六角法兰螺栓军绿M6*16	BOLT M6*16	7	
F7-06	1260300180000	QM125-2后挡泥板胶圈	CUSHION,REAR FENDER REAR	2	
F7-07	1040300350000	QM125-2调链器	ADJUSTER	2	
F7-08	1080300140000	QM125-2后平叉轴(含螺母)	BOLT,RR.FORK PIVOT	1	
F7-09	1260300290000	QM125-2链条滑块	BUFFER, CHAIN TOUCH DEFFENSE	1	
F7-10	7032608000147	六角法兰螺母军绿	HEXAGON FLANGE BOLT	4	
F7-11	7630308050168	六角球头螺栓蓝白锌	HEXAGON BALL HEAD BOLT	2	

F8 - MAIN STAND\SIDE STAND (主支架\侧支架)

F8



NO.	CODE	CN DESCRIPTION	EN DESCRIPTION	QTY	REMARKS
F8-01	1041400060000	QM250-2X侧支架	SIDE STAND	1	
F8-02	1290300020000	QM125-2侧支架簧	SPRING A,SIDE STAND	1	
F8-03	7640310035267	侧支腿阶梯螺栓军绿	BOLT,HEX STEP (M10×35)	1	
F8-04	7640310035267	六角螺母军绿	NUT,HEX (M10)	1	
F8-05	7013006025107	六角法兰螺栓军绿	HEXAGON FLANGE BOLT	2	
F8-06	1041400090000	QM250-2X刹车踏板(碟刹)	PEDAL, REAR BREAK	1	
F8-07	1290300031000	QM125-2刹车踏板簧	SPRING.BACKWARD,BRAKE PEDAL	1	
F8-08	1040300061000	QM125-10B刹车踏板轴套	SPACER, BRAKE PEDAL BOSS	1	
F8-09	7012810055268	后刹车踏板螺栓M10*55*1.25	BOLT, BRAKE PEDAL	1	
F8-10	7040020016008	开口销蓝白锌	PIN, FR FOOTREST COTTER	1	
F8-11	7012406020168	六角螺栓蓝白锌	BOLT	1	
F8-12	1040400120000	QM125-2B变档杆(单向)	PEDAL COMP.,GEAR CHANGE	1	

F9-FRONT WHEEL (前轮)



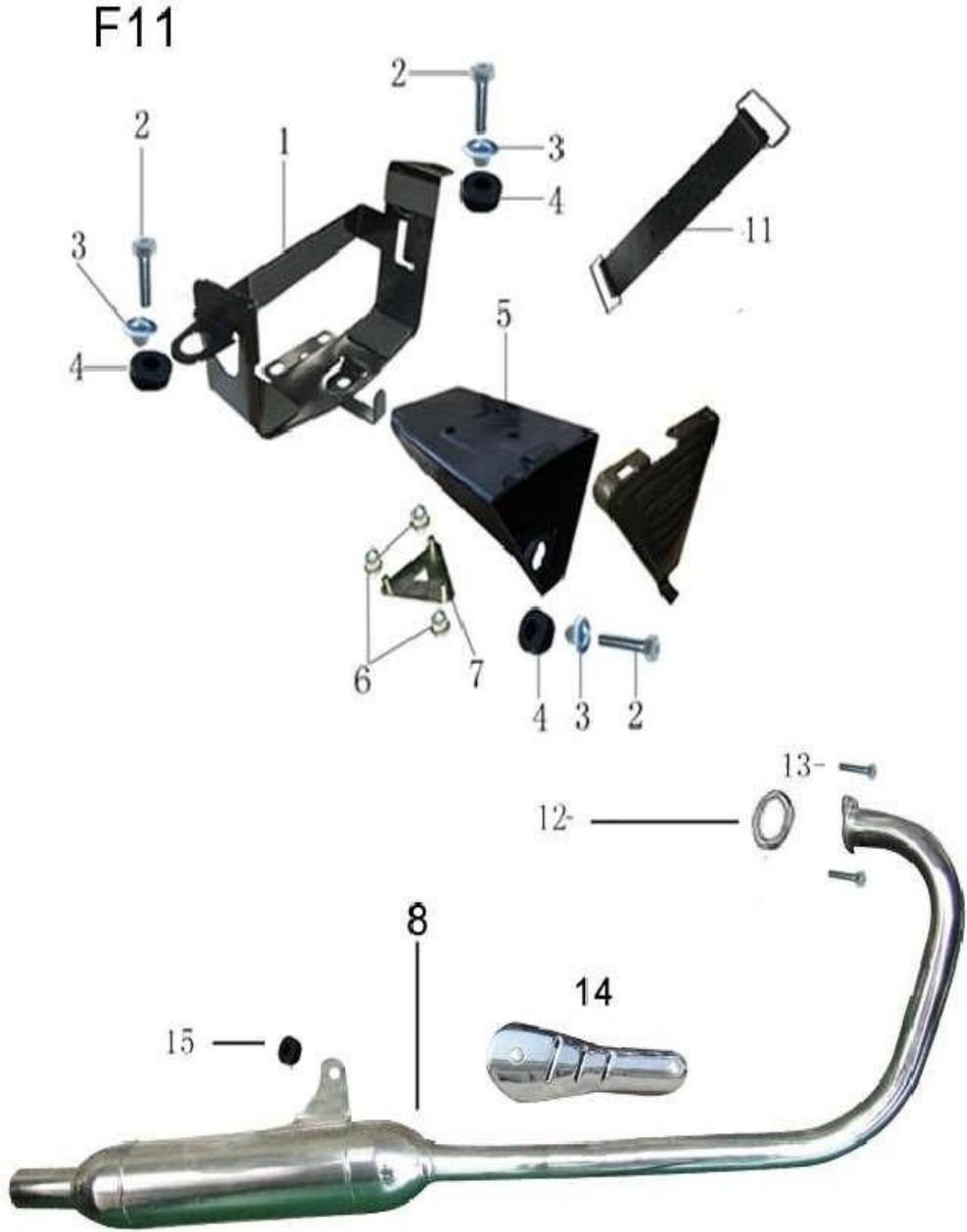
NO.	CODE	CN DESCRIPTION	EN DESCRIPTION	QTY	REMARKS
F9-01	1090100510000	前轮外胎(90/90-17)	TIRE,FR.WHEEL	1	
F9-02	1090100500000	前轮内胎(90/90-17)	TUBE,FR.WHEEL	1	
F9-03	1081400012000	QM250-2X前轮辋组合	WHEEL SUB ASS'Y,FR.	1	
F9-04	1081400070908	QM250-2X前轮右轴套	COLLAR,FR.R WHEEL SIDE	1	
F9-05	1081400060908	QM250-2X前轮轴(含螺母)	AXLE,FR.WHEEL	1	
F9-06	1081400052000	QM250-2X计速器	GEAR BOX ASSY	1	
F9-07	1141400020000	QM250-2X前碟刹盘	DISC FRONT AXLE	1	
F9-10	1090100999000	轮胎垫带	FLAP	1	
F9-11	1040200510000		POSITION LIMITER,SPEEDOMETER GEAR	1	

F10 - REAR WHEEL(后轮)



NO.	CODE	CN DESCRIPTION	EN DESCRIPTION	QTY	REMARKS
F10-01	1090100530000	后轮外胎(110/80-17)	TIRE,RR.WHEEL	1	
F10-02	1081400022000	QM250-2X后轮辋组合	WHEEL SUB ASS'Y,RR.	1	
F10-03	1070100022000	链轮42T	CLUTCH,HALF	1	
F10-04	7112210030168	六角弹平垫组合螺栓蓝白锌	BOLT,SPROCKET,FINAL DRIVE	4	
F10-05	1081400090908	QM250-2X后轮左轴套	COLLAR,RR.L	1	
F10-06	1081400080908	QM250-2X后轮轴(含螺母)	AXLE,RR.WHEEL	1	
F10-07	1141400030000	QM250-2X后碟刹组合	REAR DISK BRAKE,ASSY.	1	
F10-08	1081400100908	QM250-2X后轮右轴套	COLLAR,RR.R	1	
F10-09	1090100520000	后轮内胎(110/80-17)	Rear inner tube	1	
F10-10	7032608000148	六角法兰螺母蓝白锌	NUT,HEX (M14×1.5)	1	
F10-11	1090100999000	轮胎垫带	FLAP	1	
F10-12	1141400040000	QM250-2X后碟刹盘	REAR BRAKE DISK	1	

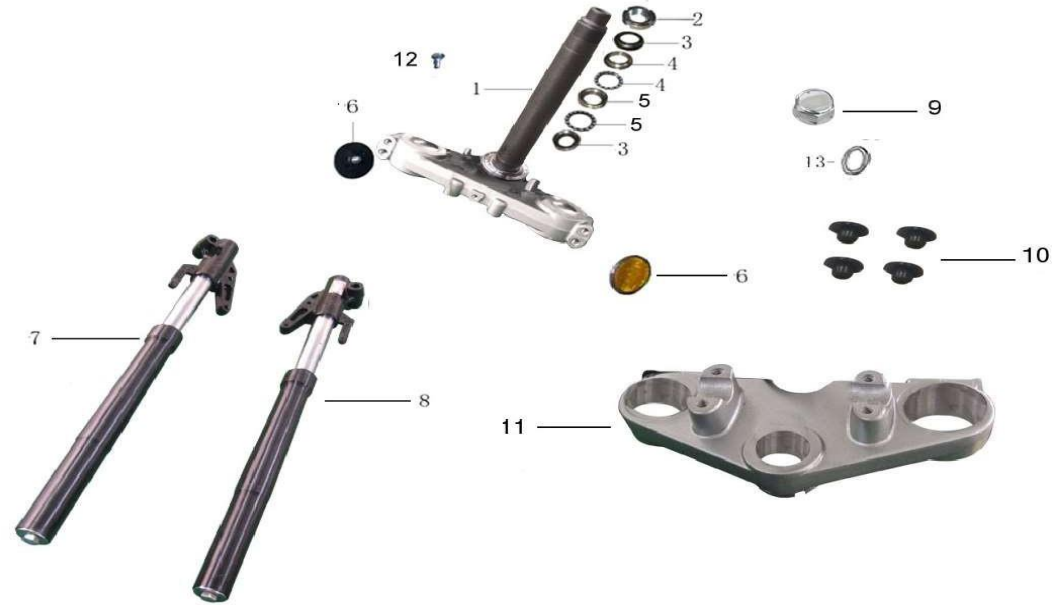
F11- AIR CLEANER\EXHAUST MUFFLER\BATTERY COMP BRACKET\AIR CONDITIONING



NO.	CODE	CN DESCRIPTION	EN DESCRIPTION	QTY	REMARKS
F11-01	1040300230000	QM125-2电池支架	BATTERY BRACKET	1	
F11-02	7012406020168	六角螺栓蓝白锌	BOLT,FLANGE (M6×20)	3	
F11-03	1260300060000	QM125-2电瓶支架衬套	BUSH BRACE,BATTERY	3	
F11-04	1260300070000	QM125-2电瓶支架胶圈	RUBBER,BATTERY	3	
F11-05	1220300021000	QM125-9B工具箱(含盖)	TOOL SET BOX	1	
F11-06	7031906000148	六角螺母蓝白锌	NUT,HEX (M6)	3	
F11-07	1040300320000	QM125-2三角固定板	TRIPOD	1	
F11-08	1121400011305	0-2X消声器 (带短形防烫板安装)	EXHAUST MUFFLER	1	
F11-09	1221400014000	QM125-2X空滤器组合(欧I)	AIR CLEANER ASS'Y	1	
F11-10	7111906016168	六角平垫组合螺栓蓝白锌	WASHER BOLT	2	
F11-11	1260300891000	电瓶皮带(带保险管夹)	BAND BATTERY	1	
F11-12	1590300011000	消声器垫	GASKET,EXHAUST	1	
F11-13	7024908025167	内六角圆柱头螺钉军绿	HEXAGON BOLT	2	
F11-14	1040400255000	QM250-2X防烫板	HEAT PROOF PLATER,MUFFLER	1	
F11-15	1593200030000	QM125T-9E消声器上衬套	UPPER GASKET,MUFFLER	1	

F12 - FRONT SHOCK ABSORBER\STEERING STEM\BRIDGE,FORK TOP

F12



NO.	CODE	CN DESCRIPTION	EN DESCRIPTION	QTY	REMARKS
F12-01	1051400010000	QM250-2X方向柱组件	STEM COMP.,STEERING	1	
F12-02	1051400060000	锁紧螺母	LOCKED NUT	1	
F12-03	1051400090000	防尘盖	DUST PROOF CAP	1	
F12-04	1051400130000	QM250-2X滚针上轴承组件	UPPER BEARING,STEM	1	
F12-05	1051400140000	QM250-2X滚针下轴承组件	LOWER BEARING,STEM	1	
F12-06	1261000910000	QM125GY-2D侧反射器	REFLECTOR	2	
F12-07	1101400020000	QM250-2X倒置右前减震器	SHOCK ABSORBER,FRONT R.	1	
F12-08	1101400010000	QM250-2X倒置左前减震器	SHOCK ABSORBER,FRONT L.	1	
F12-09	1051400060000	QM250-2X锁紧螺母	NUT	1	
F12-10	1050700100000	QM125-2V压把块装饰片	NUT COVER	4	
F12-11	1051400020000	QM250-2X上联板	BRIDGE,FORK TOP	1	
F12-12	7013006012167	六角法兰螺栓军绿	BOLT,HEX FLANGE (M6×12)	2	
F12-13	7050122361034	垫圈白铬	GASKET	1	
	1101400020000-01		FORK OIL SEAL	1	
	1101400020000-02		FORK DUST SEAL	1	

F13 - FRONT FENDER\L&R RR.COVER(前挡泥板\左右侧盖)

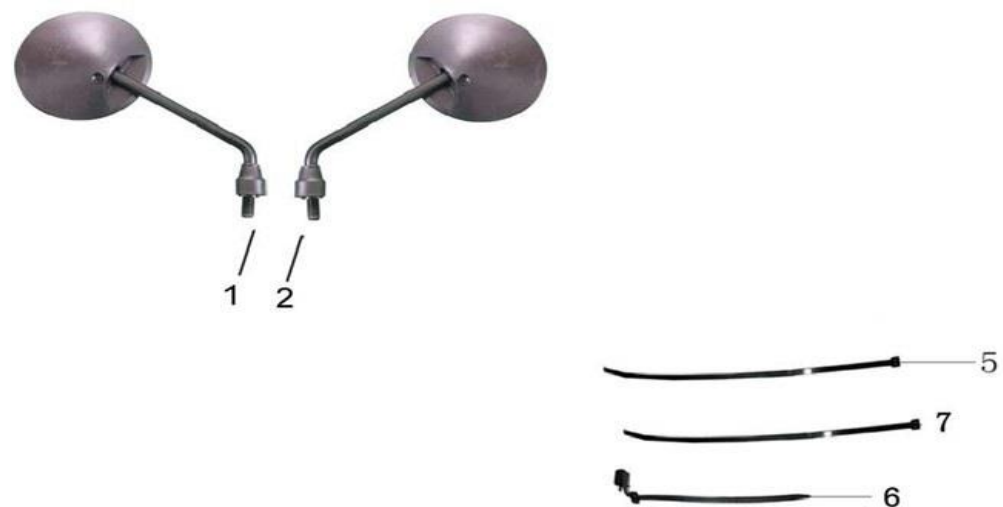
F 1 3



NO.	CODE	CN DESCRIPTION	EN DESCRIPTION	QTY	REMARKS
F13-01	1041400180000	QM250-2X前挡泥板	FRONT FENDER	1	
F13-02	7511806016167	丁字大扁头螺钉钉头 M16*16 非标	Cross screw	3	
F13-03	1260400090000	QM125-2B软轴导环	CABLE CLIP	1	
F13-04	1251400051002	QM250-2X右侧盖(B款)	COVER SUB ASS'Y,R.SIDE	1	BLACK
F13-04	1251400062002	QM250-2X右侧盖(B款)	COVER SUB ASS'Y,R.SIDE	1	ORANGE
F13-05	1251400041002	QM250-2X左侧盖(B款)	COVER SUB ASS'Y,L.SIDE	1	BLACK
F13-05	1251400061002	QM250-2X左侧盖(B款)	COVER SUB ASS'Y,L.SIDE	1	ORANGE
F13-06	1260300160000	QM125-2侧盖胶圈A	WASHER RUBBER .UNDER	2	
F13-07	1260300170000	QM125-2侧盖胶圈D	WASHER RUBBER .UNDER	2	
F13-08	1041400210000	QM250-2X前挡泥板支架 (前)	Front fender bracket(front)	1	
F13-09	1041400220000	QM250-2X前挡泥板支架 (后)	Front fender bracket(rear)	1	

F14— LABEL\ANNEX (标牌贴花\附件)

F14



NO.	CODE	CN DESCRIPTION	EN DESCRIPTION	QTY	REMARKS
F14-01	1201000021000	QM125GY-2D右后视镜(无标)	MIRROR BACK R	1	
F14-02	1201000011000	QM125GY-2D左后视镜(无标)	MIRROR BACK L	1	
F14-05	1260300901000	尼龙扎带	BAND WIRE (250mm)	6	
F14-06	1263200902000	尼龙扎带	BAND WIRE (300mm)	2	
F14-07	1260300903000	尼龙扎带	BAND WIRE (245mm)	4	